

PE/Dazzle™ 594 anti-human CD25

Catalog # / Size: 2380630 / 100 tests
2380625 / 25 tests

Clone: M-A251

Isotype: Mouse IgG1, κ

Immunogen: Human PHA-induced lymphocyte cells

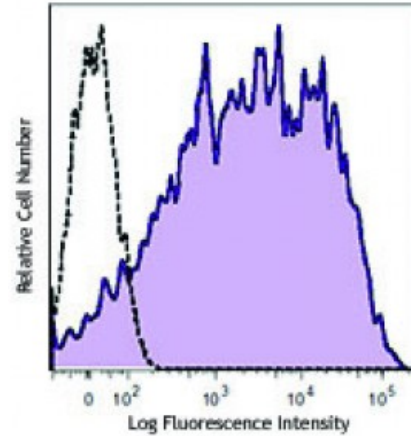
Reactivity: Human

Preparation: The antibody was purified by affinity chromatography and conjugated with PE/Dazzle™ 594 under optimal conditions. The solution is free of unconjugated PE/Dazzle™ 594 and unconjugated antibody.

Formulation: Phosphate-buffered solution, pH 7.2, containing 0.09% sodium azide and 0.2% (w/v) BSA (origin USA).

Workshop Number: IV A053

Concentration: Lot-specific



PHA-stimulated (3 days) human peripheral blood lymphocytes were stained with CD25 (clone M-A251) PE/Dazzle™ 594 (filled histogram) or mouse IgG1, κ PE/Dazzle™ 594 isotype control (open histogram).

Applications:

Applications: Flow Cytometry

Recommended Usage: Each lot of this antibody is quality control tested by immunofluorescent staining with flow cytometric analysis. For flow cytometric staining, the suggested use of this reagent is 5 microL per million cells or 5 microL per 100 microL of whole blood. It is recommended that the reagent be titrated for optimal performance for each application.

* PE/Dazzle™ 594 has a maximum excitation of 566 nm and a maximum emission of 610 nm.

Application Notes: Additional reported applications (for the relevant formats) include: immunohistochemical staining of paraformaldehyde fixed frozen sections.¹

The CD25 molecule reveals three epitope regions: A, B, and C. M-A251 antibody recognizes epitope region B. Unlike other CD25 antibody clones, M-A251 can detect CD25 after fixation with paraformaldehyde.

Application References: 1. Li H and Pauza CD. 2015. *Eur. J. Immunol.* 45:298. (IHC)

Description: CD25 is a 55 kD type I transmembrane glycoprotein also known as low affinity IL-2 receptor α chain or Tac. It is expressed on progenitor lymphocytes, activated T and B cells, and activated monocytes/macrophages. CD25 is also expressed on a subset of non-stimulated CD4⁺ T cells termed T regulatory cells. Soluble CD25/IL-2Rα is produced as a consequence of lymphocyte stimulation and is found in biological fluids following inflammatory responses. CD25 associates with IL-2 receptor β (CD122) and common γ (CD132) chains to form a high affinity IL-2R complex.

Antigen 1. Knapp W, *et al.* 1989. *Leucocyte Typing IV: White Cell Differentiation Antigens.*

- References:** Oxford University Press.
2. Schlossman S, *et al.* 1995. Leucocyte Typing V: White Cell Differentiation Antigens. Oxford University Press.
 - 3.