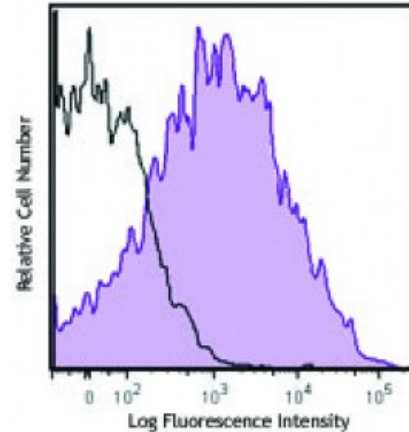


APC/Cy7 anti-human CD25

Catalog # / Size:	2380605 / 25 tests 2380610 / 100 tests
Clone:	M-A251
Isotype:	Mouse IgG1, κ
Immunogen:	Human PHA-induced lymphocyte cells
Reactivity:	Human
Preparation:	The antibody was purified by affinity chromatography and conjugated with APC/Cy7 under optimal conditions. The solution is free of unconjugated APC/Cy7 and unconjugated antibody.
Formulation:	Phosphate-buffered solution, pH 7.2, containing 0.09% sodium azide and 0.2% (w/v) BSA (origin USA).
Workshop Number:	IV A053
Concentration:	Lot-specific



PHA-stimulated (3 days) human peripheral blood lymphocytes were stained with CD25 (clone M-A251) APC/Cy7 (filled histogram) or mouse IgG1, κ APC/Cy7 isotype control (open histogram).

Applications:

Applications:	Flow Cytometry
Recommended Usage:	Each lot of this antibody is quality control tested by immunofluorescent staining with flow cytometric analysis. For flow cytometric staining, the suggested use of this reagent is 5 microL per million cells or 5 microL per 100 microL of whole blood. It is recommended that the reagent be titrated for optimal performance for each application.
Application Notes:	Additional reported applications (for the relevant formats) include: immunohistochemical staining of paraformaldehyde fixed frozen sections. ¹ The CD25 molecule reveals three epitope regions: A, B, and C. M-A251 antibody recognizes epitope region B. Unlike other CD25 antibody clones, M-A251 can detect CD25 after fixation with paraformaldehyde.
Application References:	1. Li H and Pauza CD. 2015. <i>Eur. J. Immunol.</i> 45:298. (IHC)

Description: CD25 is a 55 kD type I transmembrane glycoprotein also known as low affinity IL-2 receptor α chain or Tac. It is expressed on progenitor lymphocytes, activated T and B cells, and activated monocytes/macrophages. CD25 is also expressed on a subset of non-stimulated CD4⁺ T cells termed T regulatory cells. Soluble CD25/IL-2R α is produced as a consequence of lymphocyte stimulation and is found in biological fluids following inflammatory responses. CD25 associates with IL-2 receptor β (CD122) and common γ (CD132) chains to form a high affinity IL-2R complex.

Antigen References:

1. Knapp W, *et al.* 1989. *Leucocyte Typing IV: White Cell Differentiation Antigens.* Oxford University Press.
2. Schlossman S, *et al.* 1995. *Leucocyte Typing V: White Cell Differentiation Antigens.* Oxford University Press.
- 3.

