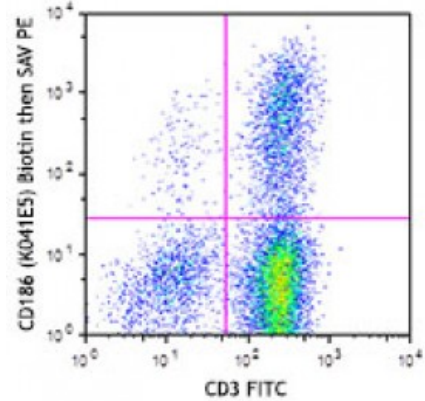


Biotin anti-human CD186 (CXCR6)

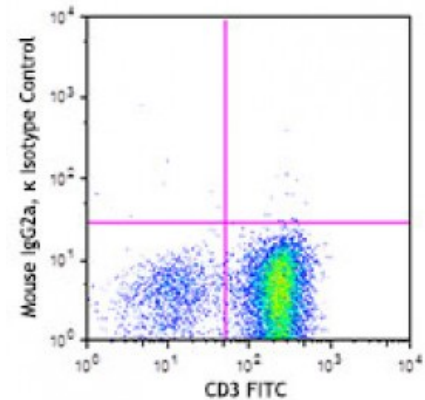
Catalog # / Size: 2380090 / 100 µg
Clone: K041E5
Isotype: Mouse IgG2a, κ
Immunogen: cDNA encoding human CXCR6
Reactivity: Human
Preparation: The antibody was purified by affinity chromatography and conjugated with biotin under optimal conditions. The solution is free of unconjugated biotin.
Formulation: Phosphate-buffered solution, pH 7.2, containing 0.09% sodium azide.
Concentration: 0.5



Human Peripheral Blood Mononuclear Cells were stimulated with IL-2 for 7 days, and then stained with CD3 FITC and Biotinylated CD186 (Clone K041E5) (Top) or Biotinylated Mouse IgG2a, κ Isotype Control, followed by SAV PE (Bottom).

Applications:

Applications: Flow Cytometry
Recommended Usage: Each lot of this antibody is quality control tested by immunofluorescent staining with flow cytometric analysis. For flow cytometric staining, the suggested use of this reagent is ≤0.5 microg per million cells in 100 microL volume. It is recommended that the reagent be titrated for optimal performance for each application.



Description: CD186, also known as CXCR6, is a 39 kD, G-protein coupled chemokine receptor, with seven transmembrane-spanning regions. CXCR6 is expressed on activated and memory T cells. Its ligand is the chemokine CXCL16. CXCR6 is involved in the recruitment of cells to inflamed sites and is also a coreceptor for HIV.

- Antigen References:**
1. Kim CH, *et al.* 2001. *J. Clin. Invest.* 107:595.
 2. Nanki T, *et al.* 2005. *Arthritis Rheum.* 52:3004.
 3. Van der Voort R, *et al.* 2005. *Arthritis Rheum.* 52:1381.
 4. Aust G, *et al*