

**PE/Dazzle™ 594 anti-human CD186 (CXCR6)**

**Catalog # / Size:** 2380080 / 100 tests  
2380075 / 25 tests

**Clone:** K041E5

**Isotype:** Mouse IgG2a, κ

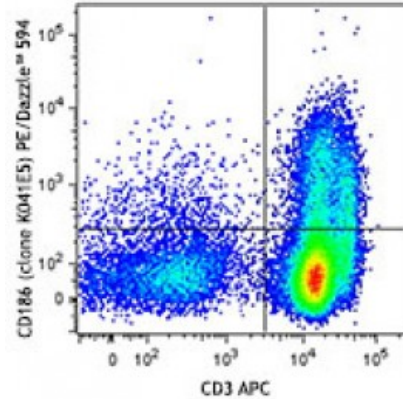
**Immunogen:** cDNA encoding human CXCR6

**Reactivity:** Human

**Preparation:** The antibody was purified by affinity chromatography and conjugated with PE/Dazzle™ 594 under optimal conditions. The solution is free of unconjugated PE/Dazzle™ 594 and unconjugated antibody.

**Formulation:** Phosphate-buffered solution, pH 7.2, containing 0.09% sodium azide and 0.2% (w/v) BSA (origin USA).

**Concentration:** Lot-specific



Human peripheral blood lymphocytes were stimulated with IL-2 for 7 days, and then stained with CD3 APC and CD186 (clone K041E5) PE/Dazzle™ 594.

**Applications:**

**Applications:** Flow Cytometry

**Recommended Usage:** Each lot of this antibody is quality control tested by immunofluorescent staining with flow cytometric analysis. For flow cytometric staining, the suggested use of this reagent is 5 microL per million cells or 5 microL per 100 microL of whole blood. It is recommended that the reagent be titrated for optimal performance for each application.

\* PE/Dazzle™ 594 has a maximum excitation of 566 nm and a maximum emission of 610 nm.

**Description:** CD186, also known as CXCR6, is a 39 kD, G-protein coupled chemokine receptor, with seven transmembrane-spanning regions. CXCR6 is expressed on activated and memory T cells. Its ligand is the chemokine CXCL16. CXCR6 is involved in the recruitment of cells to inflamed sites and is also a coreceptor for HIV.

**Antigen References:**

1. Kim CH, *et al.* 2001. *J. Clin. Invest.* 107:595.
2. Nanki T, *et al.* 2005. *Arthritis Rheum.* 52:3004.
3. Van der Voort R, *et al.* 2005. *Arthritis Rheum.* 52:1381.
4. Aust G, *et al.*