

PE/Cy7 anti-human CD186 (CXCR6)

Catalog # / Size: 2380055 / 25 tests
2380060 / 100 tests

Clone: K041E5

Isotype: Mouse IgG2a, κ

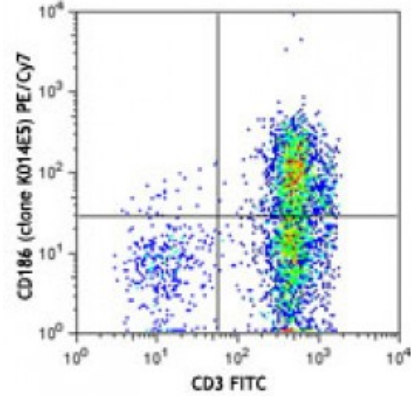
Immunogen: cDNA encoding human CXCR6

Reactivity: Human

Preparation: The antibody was purified by affinity chromatography and conjugated with PE/Cy7 under optimal conditions. The solution is free of unconjugated PE/Cy7 and unconjugated antibody.

Formulation: Phosphate-buffered solution, pH 7.2, containing 0.09% sodium azide and 0.2% (w/v) BSA (origin USA).

Concentration: Lot-specific

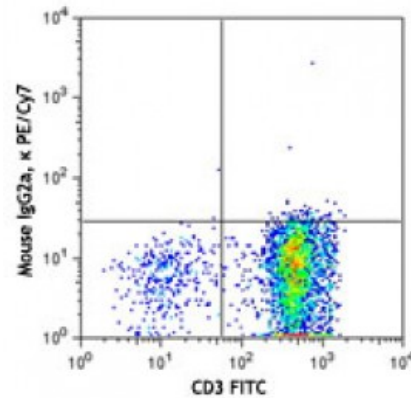


Human peripheral blood mononuclear cells were stimulated with IL-2 for 9 days, and then stained with CD3 FITC and CD186 (clone K041E5) PE/Cy7 (top) or mouse IgG2a, κ PE/Cy7 isotype control (bottom).

Applications:

Applications: Flow Cytometry

Recommended Usage: Each lot of this antibody is quality control tested by immunofluorescent staining with flow cytometric analysis. For flow cytometric staining, the suggested use of this reagent is 5 microL per million cells or 5 microL per 100 microL of whole blood. It is recommended that the reagent be titrated for optimal performance for each application.



Description: CD186, also known as CXCR6, is a 39 kD, G-protein coupled chemokine receptor, with seven transmembrane-spanning regions. CXCR6 is expressed on activated and memory T cells. Its ligand is the chemokine CXCL16. CXCR6 is involved in the recruitment of cells to inflamed sites and is also a coreceptor for HIV.

- Antigen**
- References:**
1. Kim CH, *et al.* 2001. *J. Clin. Invest.* 107:595.
 2. Nanki T, *et al.* 2005. *Arthritis Rheum.* 52:3004.
 3. Van der Voort R, *et al.* 2005. *Arthritis Rheum.* 52:1381.
 4. Aust G, *et al*