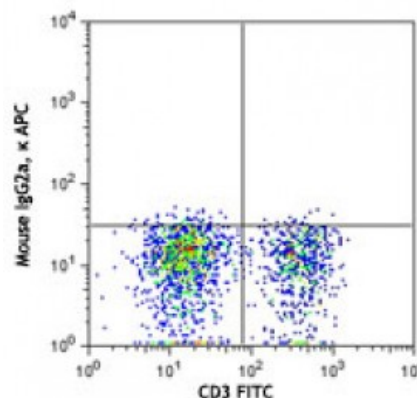


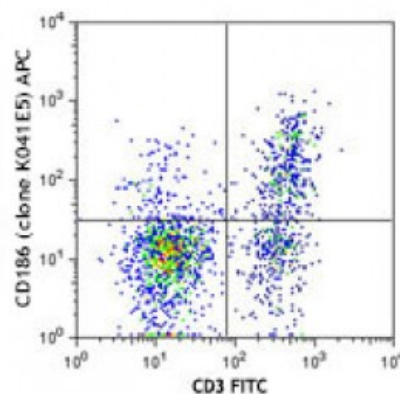
APC anti-human CD186 (CXCR6)

Catalog # / Size:	2380025 / 25 tests 2380030 / 100 tests
Clone:	K041E5
Isotype:	Mouse IgG2a, κ
Immunogen:	cDNA encoding human CXCR6
Reactivity:	Human
Preparation:	The antibody was purified by affinity chromatography and conjugated with APC under optimal conditions. The solution is free of unconjugated APC and unconjugated antibody.
Formulation:	Phosphate-buffered solution, pH 7.2, containing 0.09% sodium azide and 0.2% (w/v) BSA (origin USA).
Concentration:	Lot-specific



Applications:

Applications:	Flow Cytometry
Recommended Usage:	Each lot of this antibody is quality control tested by immunofluorescent staining with flow cytometric analysis. For flow cytometric staining, the suggested use of this reagent is 5 microL per million cells or 5 microL per 100 microL of whole blood. It is recommended that the reagent be titrated for optimal performance for each application.



Human peripheral blood mononuclear cells were stimulated with IL-2 for 9 days, and then stained with CD3 FITC and CD186 (clone K041E5) APC (top) or mouse IgG2a, κ APC isotype control (bottom).

Description:	CD186, also known as CXCR6, is a 39 kD, G-protein coupled chemokine receptor, with seven transmembrane-spanning regions. CXCR6 is expressed on activated and memory T cells. Its ligand is the chemokine CXCL16. CXCR6 is involved in the recruitment of cells to inflamed sites and is also a coreceptor for HIV.
Antigen References:	<ol style="list-style-type: none"> 1. Kim CH, <i>et al.</i> 2001. <i>J. Clin. Invest.</i> 107:595. 2. Nanki T, <i>et al.</i> 2005. <i>Arthritis Rheum.</i> 52:3004. 3. Van der Voort R, <i>et al.</i> 2005. <i>Arthritis Rheum.</i> 52:1381. 4. Aust G, <i>et al.</i>