

PE anti-human SSEA-5

Catalog # / Size: 2376015 / 25 tests
2376020 / 100 tests

Clone: 8E11

Isotype: Mouse IgG1, κ

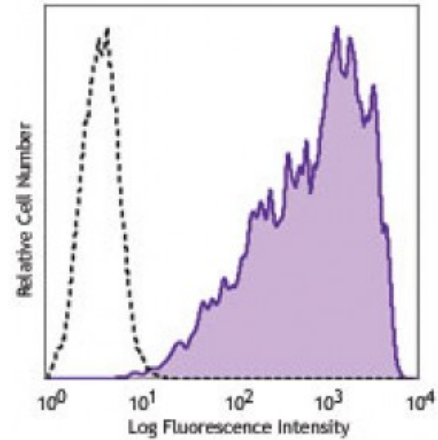
Immunogen: Human embryonic stem cells

Reactivity: Human

Preparation: The antibody was purified by affinity chromatography and conjugated with PE under optimal conditions. The solution is free of unconjugated PE and unconjugated antibody.

Formulation: Phosphate-buffered solution, pH 7.2, containing 0.09% sodium azide and 0.2% (w/v) BSA (origin USA).

Concentration: Lot-specific



Human teratocarcinoma cell line, NCCIT, was stained with SSEA-5 (clone 8e11) PE (filled histogram) or mouse IgG1, κ PE isotype control (open histogram).

Applications:

Applications: Flow Cytometry

Recommended Usage: Each lot of this antibody is quality control tested by immunofluorescent staining with flow cytometric analysis. For flow cytometric staining, the suggested use of this reagent is 5 microL per million cells or 5 microL per 100 microL of whole blood. It is recommended that the reagent be titrated for optimal performance for each application.

Application Notes: Additional reported applications (for the relevant formats) include: immunohistochemical staining of frozen tissue sections¹ and immunoprecipitation¹.

Application References: 1. Tang C, *et al.* 2011. *Nat Biotechnol.* 29:829. (IHC, IP)

Description: Stage-Specific Embryonic Antigen-5 (SSEA-5) is an oligosaccharide that contains the motif Fuc1-2Gal β 1-3GlcNAc β , which is characteristic of H-1 antigens. SSEA-5 is expressed on undifferentiated embryonic stem cells and pluripotent stem cells. It is developmentally regulated, and its expression is lost with cell differentiation.

Antigen References: 1. Andrews PW. 2011. *Nat. Biotechnol.* 29:803.
2. Itskovitz-Eldor J. 2011. *Cell. Stem. Cell.* 9:291.