

**Alexa Fluor® 488 anti-human CD303 (BDCA-2)**

**Catalog # / Size:** 2371150 / 100 tests  
2371145 / 25 tests

**Clone:** 201A

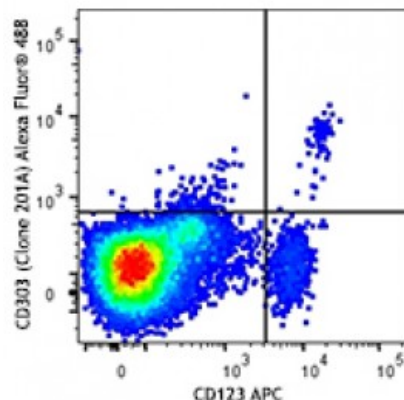
**Isotype:** Mouse IgG2a, κ

**Reactivity:** Human

**Preparation:** The antibody was purified by affinity chromatography and conjugated with Alexa Fluor® 488 under optimal conditions.

**Formulation:** Phosphate-buffered solution, pH 7.2, containing 0.09% sodium azide and 0.2% (w/v) BSA (origin USA).

**Concentration:** Lot-specific

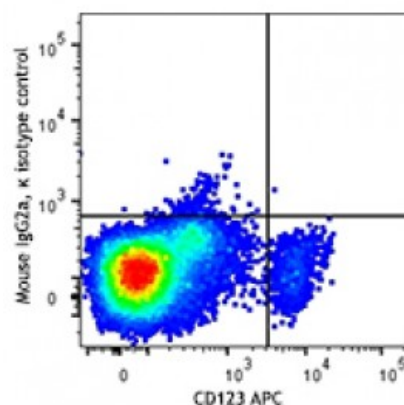


RBC lysed human blood was stained with CD123 APC and CD303 (clone 201A) Alexa Fluor® 488 (top) or mouse IgG2a, κ Alexa Fluor® 488 isotype control (bottom). Data shown was gated on the lymphocyte and monocyte populations.

**Applications:**

**Applications:** Flow Cytometry

**Recommended Usage:** Each lot of this antibody is quality control tested by immunofluorescent staining with flow cytometric analysis. For flow cytometric staining, the suggested use of this reagent is 1 microL per million cells or 1 microL per 100 microL of whole blood. It is recommended that the reagent be titrated for optimal performance for each application.



\* Alexa Fluor® 488 has a maximum emission of 519 nm when it is excited at 488 nm.

**Description:** CD303, also known as BDCA-2 and CLEC4C, is a 38 kD type II transmembrane glycoprotein. It is a member of the C-type lectin superfamily. CD303 is expressed by plasmacytoid dendritic cells (pDCs) and is involved in cell adhesion, signaling, and antigen capture and processing. Crosslinking of CD303 inhibits the production of IFN-α/β and TLR-9 induced pDCs maturation.

**Antigen References:**

1. Jähn PS, *et al.* 2010. *Cell Immunol.* 265:15.
2. Graham LM and Brown GD. 2009. *Cytokine* 48:148.
3. Röck J, *et al.* 2007. *Eur. J. Immunol.* 37:3564.
4. Dzionek A, *et al.* 20