

FITC anti-human CD303 (BDCA-2)

Catalog # / Size: 2371035 / 25 tests
2371040 / 100 tests

Clone: 201A

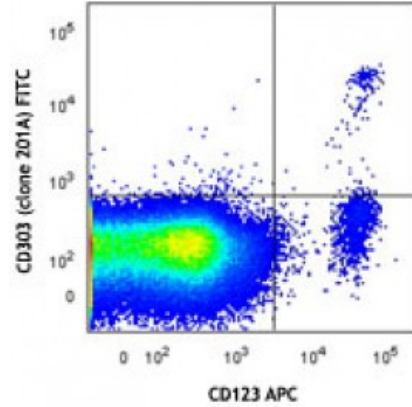
Isotype: Mouse IgG2a, κ

Reactivity: Human

Preparation: The antibody was purified by affinity chromatography, and conjugated with FITC under optimal conditions. The solution is free of unconjugated FITC.

Formulation: Phosphate-buffered solution, pH 7.2, containing 0.09% sodium azide and 0.2% (w/v) BSA (origin USA).

Concentration: Lot-specific

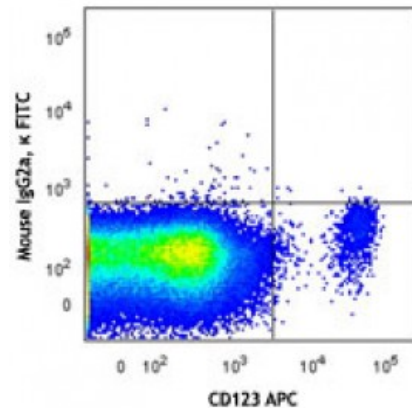


Human peripheral blood mononuclear cells were stained with CD123 APC and CD303 (clone 201A) FITC (top) or mouse IgG2a, κ FITC isotype control (bottom). Data shown was gated on the lymphocyte and monocyte populations.

Applications:

Applications: Flow Cytometry

Recommended Usage: Each lot of this antibody is quality control tested by immunofluorescent staining with flow cytometric analysis. For flow cytometric staining, the suggested use of this reagent is 5 microL per million cells or 5 microL per 100 microL of whole blood. It is recommended that the reagent be titrated for optimal performance for each application.



Application References: 1. Lee J, *et al.* 2015. *J Exp Med.* 212:385. [PubMed](#)
2. Breton G, *et al.* 2015. *J Exp Med.* 212:401. [PubMed](#)

Description: CD303, also known as BDCA-2 and CLEC4C, is a 38 kD type II transmembrane glycoprotein. It is a member of the C-type lectin superfamily. CD303 is expressed by plasmacytoid dendritic cells (pDCs) and is involved in cell adhesion, signaling, and antigen capture and processing. Crosslinking of CD303 inhibits the production of IFN-α/β and TLR-9 induced pDCs maturation.

Antigen References: 1. Jähn PS, *et al.* 2010. *Cell Immunol.* 265:15.
2. Graham LM and Brown GD. 2009. *Cytokine* 48:148.
3. Röck J, *et al.* 2007. *Eur. J. Immunol.* 37:3564.
4. Dzionek A, *et al.* 20