

**PE/Cy7 anti-human CD89**

**Catalog # / Size:** 2370540 / 100 tests  
2370535 / 25 tests

**Clone:** A59

**Isotype:** Mouse IgG1,  $\kappa$

**Immunogen:** Ag8.653 myeloma cells

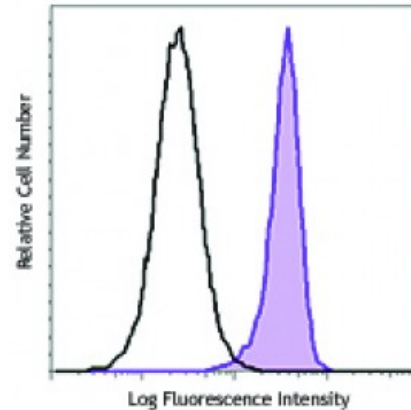
**Reactivity:** Human

**Preparation:** The antibody was purified by affinity chromatography and conjugated with PE/Cy7 under optimal conditions. The solution is free of unconjugated PE/Cy7 and unconjugated antibody.

**Formulation:** Phosphate-buffered solution, pH 7.2, containing 0.09% sodium azide and 0.2% (w/v) BSA (origin USA).

**Workshop Number:** V MR30

**Concentration:** Lot-specific



Human peripheral blood granulocytes were stained with CD89 (clone A59) PE/Cy7 (filled histogram) or mouse IgG1,  $\kappa$  PE/Cy7 isotype control (open histogram).

**Applications:**

**Applications:** Flow Cytometry

**Recommended Usage:** Each lot of this antibody is quality control tested by immunofluorescent staining with flow cytometric analysis. For flow cytometric staining, the suggested use of this reagent is 5 microL per million cells or 5 microL per 100 microL of whole blood. It is recommended that the reagent be titrated for optimal performance for each application.

**Application References:**

1. Monteiro RC, *et al.* 1992. *J. Immunol.* 148:1764.
2. Shen L. 1992. *J. Leukoc. Biol.* 51:373.
3. Schlossman S, *et al.* Eds. 1995. *Leucocyte Typing V.* Oxford University Press. New York.
4. Rogers KA, *et al.* 2004. *Immunology* 113:178.

**Description:** CD89, also known as Fc $\alpha$ R, is a 55-100 kD glycosylated protein. It belongs to the immunoglobulin gene family. It is expressed on granulocytes, monocytes, and macrophages but is absent on T cells. It can interact with IgA aggregates and plays an important role in IgA mediated immune responses.

**Antigen References:**

1. Patry C, *et al.* 1996. *J. Immunol.* 156:4442.
2. de Wit, *et al.* 1995. *J. Immunol.* 155:1203.
3. Honorio-França AC, *et al.* 2001. *J. Leukoc. Biol.* 69:289.