

**FITC anti-human CD183 (CXCR3)**

**Catalog # / Size:** 2368515 / 25 tests  
2368520 / 100 tests

**Clone:** G025H7

**Isotype:** Mouse IgG1, κ

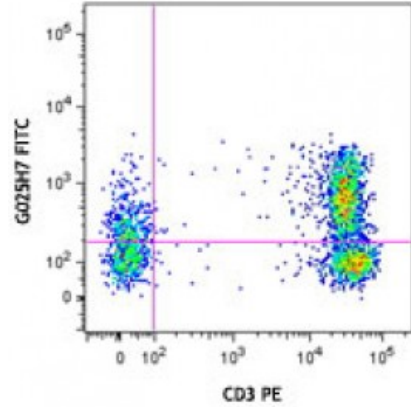
**Immunogen:** Human CXCR3 transfectants

**Reactivity:** Human

**Preparation:** The antibody was purified by affinity chromatography, and conjugated with FITC under optimal conditions. The solution is free of unconjugated FITC.

**Formulation:** Phosphate-buffered solution, pH 7.2, containing 0.09% sodium azide and 0.2% (w/v) BSA (origin USA).

**Concentration:** Lot-specific

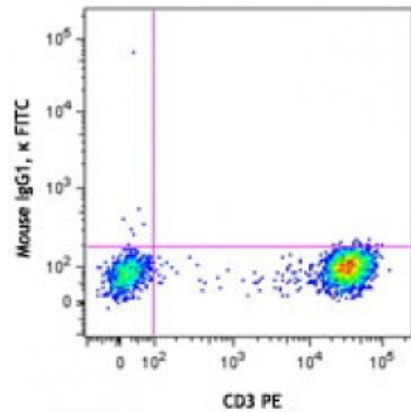


Human peripheral lymphocytes were stained with CD3 PE and CXCR3 (clone G025H7) FITC (top) or mouse IgG1, κ FITC isotype control (bottom).

**Applications:**

**Applications:** Flow Cytometry

**Recommended Usage:** Each lot of this antibody is quality control tested by immunofluorescent staining with flow cytometric analysis. **Test size products are transitioning from 20 microL to 5 microL per test.** Please check your vial or your CoA to find the suggested use of this reagent per million cells in 100 microL staining volume or per 100 microL of whole blood. It is recommended that the reagent be titrated for optimal performance for each application.



**Description:** Human CXCR3, also known as GPR9, is a chemokine receptor that binds CXCL9, CXCL10, and CXCL11. It is a 38 kD seven-pass transmembrane receptor coupled to G-protein. CXCR3 is highly expressed by T cells (Th1), natural killer cells (NK cells), dendritic cells, mast cells, alveolar macrophages, eosinophils, and human airway epithelial cells. CXCR3 is important for effector lymphocyte recruitment into inflamed tissue in various inflammatory and autoimmune diseases, such as chronically inflamed liver, Crohn's disease, rheumatoid arthritis, multiple sclerosis, and inflammatory skin diseases.

- Antigen**
- References:**
1. Loetscher M, *et al.* 1996. *J. Exp. Med.* 184:963.
  2. Cole KE, *et al.* 1998. *J. Exp. Med.* 187:2009.
  3. Aksoy MO, *et al.* 2006. *Am. J. Physiol. Lung Cell Mol. Physiol.* 290:L909.
  4. Curbi