

**FITC anti-human CD371 (CLEC12A)**

**Catalog # / Size:** 2368035 / 25 tests  
2368040 / 100 tests

**Clone:** 50C1

**Isotype:** Mouse IgG2a, κ

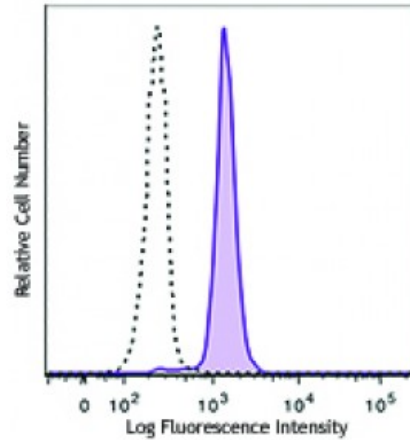
**Immunogen:** 293T cells expressing CLEC12A-Flag

**Reactivity:** Human

**Preparation:** The antibody was purified by affinity chromatography and conjugated with FITC under optimal conditions. The solution is free of unconjugated FITC and unconjugated antibody.

**Formulation:** Phosphate-buffered solution, pH 7.2, containing 0.09% sodium azide and 0.2% (w/v) BSA (origin USA).

**Concentration:** 0.2



Human peripheral blood monocytes were stained with anti-human CD371 (CLEC12A, clone 50C1) FITC (filled histogram) or mouse IgG2a, κ FITC isotype control (open histogram).

**Applications:**

**Applications:** Flow Cytometry

**Recommended Usage:** Each lot of this antibody is quality control tested by immunofluorescent staining with flow cytometric analysis. For flow cytometric staining, the suggested use of this reagent is 5 microL per million cells or 5 microL per 100 microL of whole blood. It is recommended that the reagent be titrated for optimal performance for each application.

This product is subject to proprietary rights of Sirigen Inc. and is made and sold under license from Sirigen Inc. The purchase of this product conveys to the buyer a non-transferable right to use the purchased product for research purposes only. This product may not be resold or incorporated in any manner into another product for resale. Any use for therapeutics or diagnostics is strictly prohibited. This product is covered by U.S. Patent(s), pending patent applications and foreign equivalents.

**Application References:**

1. Lahoud MH, *et al.* 2009. *J. Immunol.* 182:7587. (FC)
2. Lahoud MH, *et al.* 2011. *J. Immunol.* 187:842. (FC)
3. Neumann K, *et al.* 2014. *Immunity.* 40:389. [PubMed](#)

**Description:** CD371 (CLEC12A), also known as DCAL-2, MICL or CLL-1, is a 30 kD type II transmembrane protein with extracellular C-type lectin domains, belonging to the C-type lectin family. It is expressed on monocytes, granulocytes, NK cells, and basophils. Its cytoplasmic ITIM motif modulates signaling cascades and is involved in phosphorylation of tyrosine residues in MAP kinases.

**Antigen References:**

1. Lahoud MH, *et al.* 2009. *J. Immunol.* 182:7587.
2. Chen CH, *et al.* 2006. *Blood* 107:1459.
3. Marshall AS, *et al.* 2004. *J. Biol. Chem.* 279:14792.