

APC anti-human CD371 (CLEC12A)

Catalog # / Size: 2368030 / 100 tests
2368025 / 25 tests

Clone: 50C1

Isotype: Mouse IgG2a, κ

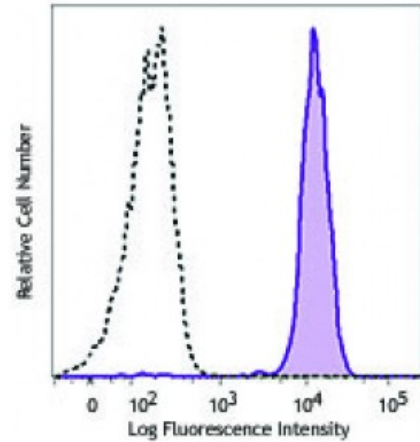
Immunogen: 293T cells expressing CLEC12A-Flag

Reactivity: Human

Preparation: The antibody was purified by affinity chromatography and conjugated with APC under optimal conditions. The solution is free of unconjugated APC and unconjugated antibody.

Formulation: Phosphate-buffered solution, pH 7.2, containing 0.09% sodium azide and 0.2% (w/v) BSA (origin USA).

Concentration: Lot-specific



Human peripheral blood monocytes were stained with anti-human CD371 (CLEC12A, clone 50C1) APC (filled histogram) or mouse IgG2a, κ APC isotype control (open histogram).

Applications:

Applications: Flow Cytometry

Recommended Usage: Each lot of this antibody is quality control tested by immunofluorescent staining with flow cytometric analysis. For flow cytometric staining, the suggested use of this reagent is 5 microL per million cells or 5 microL per 100 microL of whole blood. It is recommended that the reagent be titrated for optimal performance for each application.

Application References:

1. Lahoud MH, *et al.* 2009. *J. Immunol.* 182:7587. (FC)
2. Lahoud MH, *et al.* 2011. *J. Immunol.* 187:842. (FC)
3. Neumann K, *et al.* 2014. *Immunity.* 40:389. [PubMed](#)

Description: CD371 (CLEC12A), also known as DCAL-2, MICL or CLL-1, is a 30 kD type II transmembrane protein with extracellular C-type lectin domains, belonging to the C-type lectin family. It is expressed on monocytes, granulocytes, NK cells, and basophils. Its cytoplasmic ITIM motif modulates signaling cascades and is involved in phosphorylation of tyrosine residues in MAP kinases.

Antigen References:

1. Lahoud MH, *et al.* 2009. *J. Immunol.* 182:7587.
2. Chen CH, *et al.* 2006. *Blood* 107:1459.
3. Marshall AS, *et al.* 2004. *J. Biol. Chem.* 279:14792.