

**Brilliant Violet 421™ anti-human CD196 (CCR6)**

**Catalog # / Size:** 2367035 / 25 tests  
2367040 / 100 tests

**Clone:** G034E3

**Isotype:** Mouse IgG2b, κ

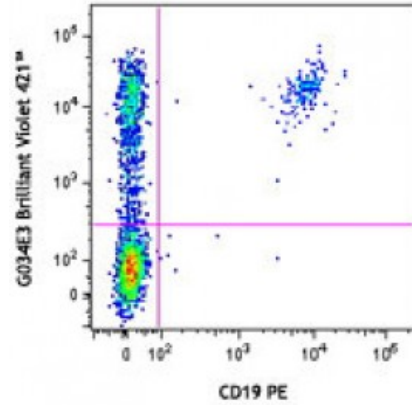
**Immunogen:** CCR6-transfected cells

**Reactivity:** Human

**Preparation:** The antibody was purified by affinity chromatography and conjugated with Brilliant Violet 421™ under optimal conditions. The solution is free of unconjugated Brilliant Violet 421™ and unconjugated antibody.

**Formulation:** Phosphate-buffered solution, pH 7.2, containing 0.09% sodium azide and BSA (origin USA).

**Concentration:** Lot-specific

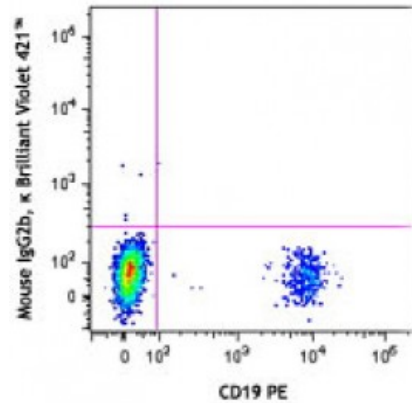


Human peripheral blood lymphocytes stained with CD19 PE and CD196 (clone G034E3) Brilliant Violet 421™ (top) or mouse IgG2b, κ Brilliant Violet 421™ isotype control (bottom).

**Applications:**

**Applications:** Flow Cytometry

**Recommended Usage:** Each lot of this antibody is quality control tested by immunofluorescent staining with flow cytometric analysis. For flow cytometric staining, the suggested use of this reagent is ≤5 microL per million cells or 5 microL per 100 microL of whole blood. It is recommended that the reagent be titrated for optimal performance for each application.



Brilliant Violet 421™ excites at 405 nm and emits at 421 nm. The standard bandpass filter 450/50 nm is recommended for detection. Brilliant Violet 421™ is a trademark of Sirigen Group Ltd.

This product is subject to proprietary rights of Sirigen Inc. and is made and sold under license from Sirigen Inc. The purchase of this product conveys to the buyer a non-transferable right to use the purchased product for research purposes only. This product may not be resold or incorporated in any manner into another product for resale. Any use for therapeutics or diagnostics is strictly prohibited. This product is covered by U.S. Patent(s), pending patent applications and foreign equivalents.

---

**Description:** CCR6, also known as CD196, is a chemokine receptor that is expressed on immature dendritic cells, B lymphocytes, and memory T cells. CCR6 binds CCL20, although members of the  $\beta$  defensin family also bind CCR6 with a lower affinity. CCR6 positive cells, and its ligand CCL20, have been detected in numerous organs, especially the secondary lymphoid organ. CCL20 is selectively made by the follicle-associated epithelium (FAE) overlying Peyers Patches (PPs) and isolated lymphoid follicles (ILFs). CCL20 contributes to the recruitment of CCR6-expressing B cells to these structures. In humans, CCR6 can function to mediate arrest of T cells on dermal endothelial cells and is highly expressed on T cells resident in both normal and psoriatic skin. CCR6 and/or CCL20 have been implicated in the pathogenesis of rheumatoid arthritis and inflammatory bowel disease. Human T cells that are able to produce IL-17 express CCR6. It suggests that CCL20 and CCR6 have a role in inflammatory diseases by recruiting Th17 cells to target tissues.

**Antigen**  
**References:**

1. Zaballos A, *et al.* 1996. *Biochem. Bioph. Res. Co.* 227:846.
2. Yang D, *et al.* 1999. *Science* 286:525.
3. MacDonald KG, *et al.* 2007. *Am. J. Pathol.* 170:1229.
4. Homey B, *et al.* 2000