

**Alexa Fluor® 700 anti-human Perforin**

**Catalog # / Size:** 2366615 / 25 tests  
2366620 / 100 tests

**Clone:** B-D48

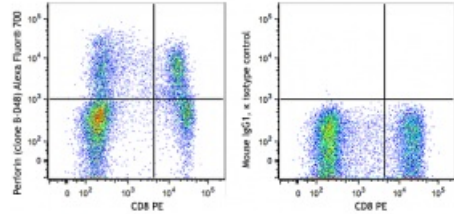
**Isotype:** Mouse IgG1

**Reactivity:** Human

**Preparation:** The antibody was purified by affinity chromatography and conjugated with Alexa Fluor® 700 under optimal conditions. The solution is free of unconjugated Alexa Fluor® 700.

**Formulation:** Phosphate-buffered solution, pH 7.2, containing 0.09% sodium azide and 0.2% (w/v) BSA (origin USA).

**Concentration:** Lot-specific



Human peripheral blood lymphocytes were surface stained with CD8 PE, fixed with Fixation Buffer, permeabilized with Intracellular Staining Permeabilization Wash Buffer and then intracellularly stained with Perforin (clone B-D48) Alexa Fluor® 700 (lef

**Applications:**

**Applications:** Intracellular Flow Cytometry

**Recommended Usage:** Each lot of this antibody is quality control tested by intracellular immunofluorescent staining with flow cytometric analysis. For flow cytometric staining, the suggested use of this reagent is 5 µl per million cells or 5 µl per 100 µl of whole blood. It is recommended that the reagent be titrated for optimal performance for each application.

\* Alexa Fluor® 700 has a maximum emission of 719 nm when it is excited at 633 nm / 635 nm. Prior to using Alexa Fluor® 700 conjugate for flow cytometric analysis, please verify your flow cytometer's capability of exciting and detecting the fluorochrome.

**Application References:** 1. Lieberman J. 2003. *Nat. Rev. Immunol.* 3:361.  
2. Trapani J, et al. 2002. *Nat. Rev. Immunol.* 2:735.

**Description:** Perforin is a 70 kD cytolytic protein that is expressed in the cytoplasmic granules of cytotoxic T lymphocytes (CTLs) and natural killer (NK) cells. Perforin is one of the major effector molecules used by cytotoxic T cells and NK cells to mediate targeted cell lysis.

**Antigen References:** 1. Lieberman J. 2003. *Nat. Rev. Immunol.* 3:361.  
2. Trapani J, et al. 2002. *Nat. Rev. Immunol.* 2:735.