

Alexa Fluor® 647 anti-human Perforin

Catalog # / 2366605 / 25 tests
Size: 2366610 / 100 tests

Clone: B-D48

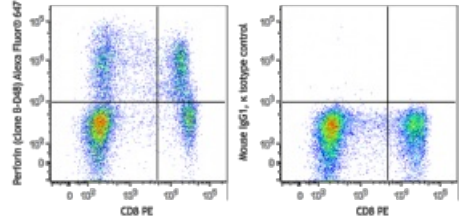
Isotype: Mouse IgG1

Reactivity: Human

Preparation: The antibody was purified by affinity chromatography and conjugated with Alexa Fluor® 647 under optimal conditions. The solution is free of unconjugated Alexa Fluor® 647.

Formulation: Phosphate-buffered solution, pH 7.2, containing 0.09% sodium azide and 0.2% (w/v) BSA (origin USA).

Concentration: Lot-specific



Human peripheral blood lymphocytes were surface stained with CD8 PE

Applications:

Applications: Intracellular Flow Cytometry

Recommended Usage: Each lot of this antibody is quality control tested by intracellular immunofluorescent staining with flow cytometric analysis. For flow cytometric staining, the suggested use of this reagent is 5 µl per million cells in 100 µl staining volume or 5 µl per 100 µl of whole blood. It is recommended that the reagent be titrated for optimal performance for each application.

* Alexa Fluor® 647 has a maximum emission of 668 nm when it is excited at 633 nm / 635 nm.

Application References: 1. Lieberman J. 2003. *Nat. Rev. Immunol.* 3:361.
 2. Trapani J, et al. 2002. *Nat. Rev. Immunol.* 2:735.

Description: Perforin is a 70 kD cytolytic protein that is expressed in the cytoplasmic granules of cytotoxic T lymphocytes (CTLs) and natural killer (NK) cells. Perforin is one of the major effector molecules used by cytotoxic T cells and NK cells to mediate targeted cell lysis.

Antigen References: 1. Lieberman J. 2003. *Nat. Rev. Immunol.* 3:361.
 2. Trapani J, et al. 2002. *Nat. Rev. Immunol.* 2:735.