

**Alexa Fluor® 488 anti-human Perforin**

**Catalog # /** 2366600 / 100 tests  
**Size:** 2366595 / 25 tests

**Clone:** B-D48

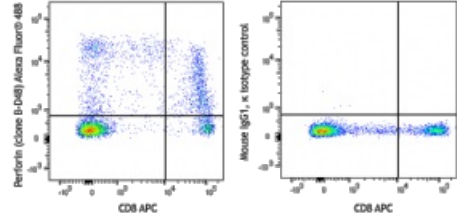
**Isotype:** Mouse IgG1

**Reactivity:** Human

**Preparation:** The antibody was purified by affinity chromatography and conjugated with Alexa Fluor® 488 under optimal conditions. The solution is free of unconjugated Alexa Fluor® 488.

**Formulation:** Phosphate-buffered solution, pH 7.2, containing 0.09% sodium azide and 0.2% (w/v) BSA (origin USA).

**Concentration:** Lot-specific



Human peripheral blood lymphocytes were surface stained with CD8 APC

**Applications:**

**Applications:** Intracellular Flow Cytometry

**Recommended Usage:** Each lot of this antibody is quality control tested by intracellular immunofluorescent staining with flow cytometric analysis. For flow cytometric staining, the suggested use of this reagent is 5 µl per million cells in 100 µl staining volume or 5 µl per 100 µl of whole blood. It is recommended that the reagent be titrated for optimal performance for each application.

\* Alexa Fluor® 488 has a maximum emission of 519 nm when it is excited at 488 nm.

**Application References:** 1. Lieberman J. 2003. *Nat. Rev. Immunol.* 3:361.  
 2. Trapani J, et al. 2002. *Nat. Rev. Immunol.* 2:735.

**Description:** Perforin is a 70 kD cytolytic protein that is expressed in the cytoplasmic granules of cytotoxic T lymphocytes (CTLs) and natural killer (NK) cells. Perforin is one of the major effector molecules used by cytotoxic T cells and NK cells to mediate targeted cell lysis.

**Antigen References:** 1. Lieberman J. 2003. *Nat. Rev. Immunol.* 3:361.  
 2. Trapani J, et al. 2002. *Nat. Rev. Immunol.* 2:735.