

APC/Fire™ 750 anti-human EGFR

Catalog # / Size: 2364630 / 100 tests
2364625 / 25 tests

Clone: AY13

Isotype: Mouse IgG1, κ

Immunogen: Non-small cell lung cancer (NSCLC) cell line NCI-H322

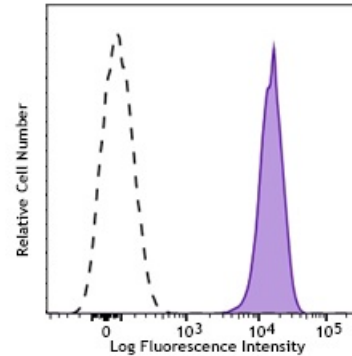
Reactivity: Human

Preparation: The antibody was purified by affinity chromatography and conjugated with APC/Fire™ 750 under optimal conditions.

Formulation: Phosphate-buffered solution, pH 7.2, containing 0.09% sodium azide and 0.2% (w/v) BSA (origin USA).

Workshop Number: V S160

Concentration: Lot-specific



Human cervical cancer cell line HELA was stained with EGFR (clone AY13) APC/Fire™ 750 (filled histogram) or mouse IgG1, κ APC/Fire™ 750 isotype control (open histogram).

Applications:

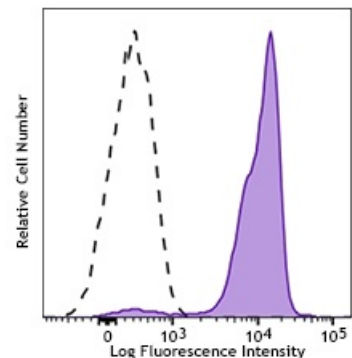
Applications: Flow Cytometry

Recommended Usage: Each lot of this antibody is quality control tested by immunofluorescent staining with flow cytometric analysis. For flow cytometric staining, the suggested use of this reagent is 5 µl per million cells in 100 µl staining volume or 5 µl per 100 µl of whole blood.

* APC/Fire™ 750 has a maximum excitation of 650 nm and a maximum emission of 787 nm.

Application Notes: Additional reported applications (for the relevant formats) include: immunofluorescence staining², Western blotting², immunoprecipitation², and ELISA³.

Application References: 1. Yamaguchi M, *et al.* 2009. The 15th Annual Meeting Japan Society of Gene Therapy. p1056. Abstract 92.



Human peripheral blood granulocytes were stained with True-Stain Monocyte Blocker™ (Cat. No. 426103) and Siglec-9 (clone K8) APC/Fire™ 750 (filled histogram) or mouse IgG1, κ isotype control APC/Fire™ 750 (open histogram).

Description: Epidermal growth factor receptor (EGFR) is a transmembrane glycoprotein and member of the protein kinase superfamily that regulates cell growth and differentiation. EGFR binds EGF, TGF- α , amphiregulin, betacellulin, heparin-binding EGF-like growth factor, GP30, and vaccinia virus growth factor - all members of the EGF family. Ligand binding induces EGFR dimerization and autophosphorylation, initiating the MAPK, Akt, and JNK signaling pathways. EGFR is expressed by epithelial and endothelial cells and is frequently expressed by epithelial carcinomas.

Antigen
References:

1. da Cunha Santos G, *et al.* 2011. *Annu. Rev. Pathol.* 6:49.
2. Gusterson BA and Hunter KD. 2009. *Lancet Oncol.* 10:522.
3. Mano M and Humblet Y. 2008. *Nat. Clin. Pract. Oncol.* 5:415.
4. Pao W and Chmielecki J. 2010. *Nat. Rev. Cancer* 10:760.