

**PE anti-human Siglec-9**

**Catalog # / Size:** 2357515 / 25 tests  
2357520 / 100 tests

**Clone:** K8

**Isotype:** Mouse IgG1,  $\kappa$

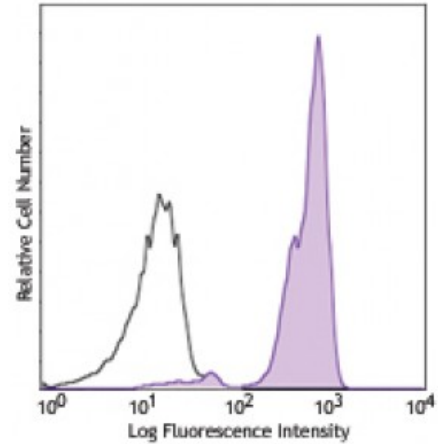
**Immunogen:** Recombinant Siglec-9 fused to Fc region of human IgG

**Reactivity:** Human

**Preparation:** The antibody was purified by affinity chromatography and conjugated with PE under optimal conditions. The solution is free of unconjugated PE and unconjugated antibody.

**Formulation:** Phosphate-buffered solution, pH 7.2, containing 0.09% sodium azide and 0.2% (w/v) BSA (origin USA).

**Concentration:** Lot-specific



Human peripheral blood granulocytes were stained with Siglec-9 (clone K8) PE (filled histogram) or mouse IgG1 PE isotype control (open histogram).

**Applications:**

**Applications:** Flow Cytometry

**Recommended Usage:** Each lot of this antibody is quality control tested by immunofluorescent staining with flow cytometric analysis. **Test size products are transitioning from 20 microL to 5 microL per test.** Please check your vial or your CoA to find the suggested use of this reagent per million cells in 100 microL staining volume or per 100 microL of whole blood. It is recommended that the reagent be titrated for optimal performance for each application.

**Application Notes:** Additional reported applications (for the relevant formats) include: immunofluorescence staining<sup>2</sup>, Western blotting<sup>2</sup>, immunoprecipitation<sup>2</sup>, and ELISA<sup>3</sup>.

**Application References:**

- Zhang J, *et al.* 2000. *J. Biol. Chem.* 275:22121.
- Avril T, *et al.* 2004. *J. Immunol.* 173:6841. (IF, IP, WB)
- Biedermann B, *et al.* 2007. *Leukemia Res.* 31:221. (ELISA)

**Description:** Siglecs are cell surface receptors belonging to the immunoglobulin superfamily that recognize sugar antigens. The extracellular domain of siglec-9 contains an IgV region, which binds sialic acid, followed by two IgC regions. Siglec 9 and siglec 6-8,10-12 are CD33 (siglec 3) like siglecs, which have two ITIMs in the cytoplasmic tails, suggesting their functional involvement in signal transduction. It is highly expressed on neutrophils and monocytes, and at lower levels on the subpopulations of T and B lymphocytes and NK cells. Siglec-9 plays a role in negative regulation of T cell activation, and it also affects neutrophil apoptosis.

**Antigen References:**

- Ikehara Y, *et al.* 2004. *J. Biol. Chem.* 279:43117.
- von Gunten S, *et al.* 2005. *Blood* 106:1423.