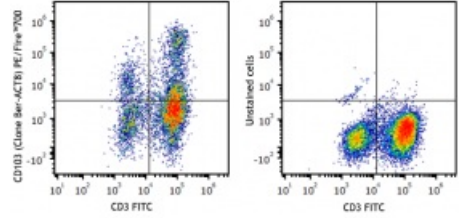


PE/Fire™ 700 anti-human CD103 (Integrin αE)

Catalog # / 2351195 / 25 tests
Size: 2351200 / 100 tests
Clone: Ber-ACT8
Isotype: Mouse IgG1, κ
Immunogen: HTLV-1 induced human T cell line MAPS16
Reactivity: Human, Non-human primate
Preparation: The antibody was purified by affinity chromatography and conjugated with PE/Fire™ 700 under optimal conditions.
Formulation: Phosphate-buffered solution, pH 7.2, containing 0.09% sodium azide and 0.2% (w/v) BSA (origin USA)
Workshop Number: V A067
Concentration: Lot-specific



PHA-stimulated (3 days) human peripheral blood lymphocytes stained with anti-human CD3 FITC and anti-human CD103 PE/Fire™ 700 (clone Ber-ACT8) (left) or CD3 FITC only (right).

Applications:

Applications: Flow Cytometry

Recommended Usage: Each lot of this antibody is quality control tested by immunofluorescent staining with flow cytometric analysis. For flow cytometric staining, the suggested use of this reagent is 5 µL per million cells in 100 µL staining volume or 5 µL per 100 µL of whole blood. It is recommended that the reagent be titrated for optimal performance for each application.

* PE/Fire™ 700 has a maximum excitation of 565 nm and a maximum emission of 695 nm.

Application Notes: Additional reported applications (for the relevant formats) include: Western Blotting¹, immunoprecipitation¹, and immunohistochemical staining of frozen tissue sections¹.

Application References:
 1. Kruschwitz M, et al. 1991. *J. Clin. Pathol.* 44:636. (WB, IP, IHC-F)
 2. Yoshino N, et al. 2000. *Exp. Anim. (Tokyo)* 49:97. (FC)

Description: CD103 is a type I transmembrane glycoprotein also known as αE integrin, integrin αIEL chain, and human mucosal lymphocyte antigen 1. It belongs to the integrin family and is primarily found on intestinal intraepithelial lymphocytes (IEL). CD103 is also expressed on a subpopulation of lamina propria T cells, epithelial dendritic cells, lamina propria-derived dendritic cells, and a small subset of peripheral lymphocytes. Treg cells express high level of CD103. Hairy cell leukemia has also been shown to express CD103. The expression of CD103 on lymphocytes can be induced upon activation and TGF-β stimulation. In association with integrin β7, CD103 is expressed as an αE/β7 heterodimer. Mature CD103 protein can be cleaved into 2 chains, a 150 kD (C-terminal) chain and a 25 kD (N-terminal) chain, which remain linked by disulfide bonds. CD103 binds to E-cadherin and mediates homing of lymphocytes to the intestinal epithelium.

- Antigen**
- References:**
1. Parker CM, et al. 1992. *P. Natl. Acad. Sci. USA* 89:1924.
 2. Kruschwitz M, et al. 1991. *J. Clin. Pathol.* 44:636.
 3. Schon MP, et al. 1999. *J. Immunol.* 162:6641.
 4. Shaw SK, et al. 1994. *J. Biol. Chem.* 269:6016.