

**PE anti-human CD179b (Ig λ5)**

**Catalog # / Size:** 2349015 / 25 tests  
2349020 / 100 tests

**Clone:** HSL11

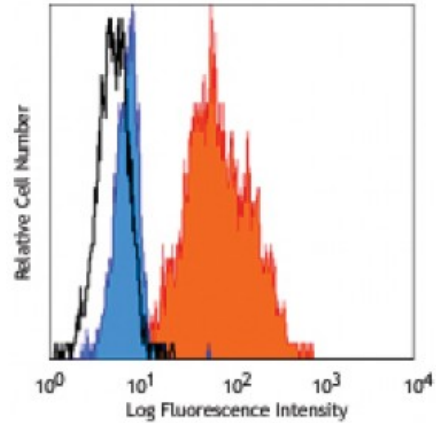
**Isotype:** Mouse IgG1, κ

**Reactivity:** Human

**Preparation:** The antibody was purified by affinity chromatography and conjugated with PE under optimal conditions. The solution is free of unconjugated PE and unconjugated antibody.

**Formulation:** Phosphate-buffered solution, pH 7.2, containing 0.09% sodium azide and 0.2% (w/v) BSA (origin USA).

**Concentration:** Lot-specific



Human cell lines REH (pro-B, blue), NALM-6 (pre-B, orange) and Ramos (B cell, open) stained with HSL11 PE

**Applications:**

**Applications:** Flow Cytometry

**Recommended Usage:** Each lot of this antibody is quality control tested by immunofluorescent staining with flow cytometric analysis. **Test size products are transitioning from 20 microL to 5 microL per test.** Please check your vial or your CoA to find the suggested use of this reagent per million cells in 100 microL staining volume or per 100 microL of whole blood. It is recommended that the reagent be titrated for optimal performance for each application.

**Application Notes:** Additional reported applications (for the relevant formats) include: immunoprecipitation<sup>1</sup> and immunohistochemistry of frozen and paraffin-embedded samples<sup>2</sup>.

**Application References:** 1. Tsyganezawa K, *et al.* 1998. *Blood* 92:4317. (IP)  
2. Kiyokawa N, *et al.* 2004. *Modern Pathol.* 17:423. (ICFC, IHC)

**Description:** CD179b, also known as Ig λ 5, λ5, and Ig omega, is a 22 kD, C-like protein member within the Ig superfamily. λ5 associates with CD179a (VpreB) to form a surrogate light (SL) chain that in turn associates with the IgM heavy chain and the CD79a/CD79b heterodimer to form the pre-B cell receptor (PreBCR) complex. The function of CD179a/CD179b is still under investigation, though it has been reported that the deficiency of CD179a and/or CD179b impairs the maturation of the B cell precursors beyond the pre-B cell stage.

**Antigen References:** 1. Zola H, *et al.* 2007. *Leukocyte and Stromal Cell Molecules: The CD Markers* Wiley-Liss A John Wiley & Sons Inc.  
2. Zhang M, *et al.* 2004. *Cell. Mol. Immunol.* 1:89.  
3. Hendriks RW and Middendorp S. 2004. *Tre*