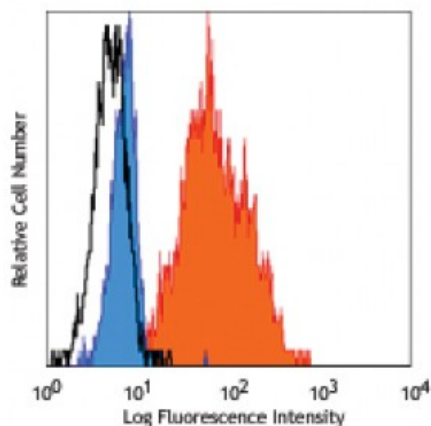


**Purified anti-human CD179b (Ig  $\lambda$ 5)**

**Catalog # / Size:** 2349010 / 100  $\mu$ g  
**Clone:** HSL11  
**Isotype:** Mouse IgG1,  $\kappa$   
**Reactivity:** Human  
**Preparation:** The antibody was purified by affinity chromatography.  
**Formulation:** Phosphate-buffered solution, pH 7.2, containing 0.09% sodium azide.  
**Concentration:** 0.5



Human cell lines REH (pro-B, blue), NALM-6 (pre-B, orange) and Ramos (B cell, open) stained with purified HSL11 conjugated with PE

**Applications:**

**Applications:** Other

**Recommended Usage:** Each lot of this antibody is quality control tested by immunofluorescent staining with flow cytometric analysis. For flow cytometric staining, the suggested use of this reagent is  $\leq 1.0$  microg per million cells in 100 microL volume. It is recommended that the reagent be titrated for optimal performance for each application.

**Application Notes:** Additional reported applications (for the relevant formats) include: immunoprecipitation<sup>1</sup> and immunohistochemistry of frozen and paraffin-embedded samples<sup>2</sup>.

**Application References:** 1. Tsyganezawa K, *et al.* 1998. *Blood* 92:4317. (IP)  
2. Kiyokawa N, *et al.* 2004. *Modern Pathol.* 17:423. (ICFC, IHC)

**Description:** CD179b, also known as Ig  $\lambda$  5,  $\lambda$ 5, and Ig omega, is a 22 kD, C-like protein member within the Ig superfamily.  $\lambda$ 5 associates with CD179a (VpreB) to form a surrogate light (SL) chain that in turn associates with the IgM heavy chain and the CD79a/CD79b heterodimer to form the pre-B cell receptor (PreBCR) complex. The function of CD179a/CD179b is still under investigation, though it has been reported that the deficiency of CD179a and/or CD179b impairs the maturation of the B cell precursors beyond the pre-B cell stage.

**Antigen References:** 1. Zola H, *et al.* 2007. *Leukocyte and Stromal Cell Molecules: The CD Markers* Wiley-Liss A John Wiley & Sons Inc.  
2. Zhang M, *et al.* 2004. *Cell. Mol. Immunol.* 1:89.  
3. Hendriks RW and Middendorp S. 2004. *Tre*