

PE/Cy7 anti-human CD235a (Glycophorin A)

Catalog # / Size: 2345560 / 100 tests
2345555 / 25 tests

Clone: HI264

Isotype: Mouse IgG2a, κ

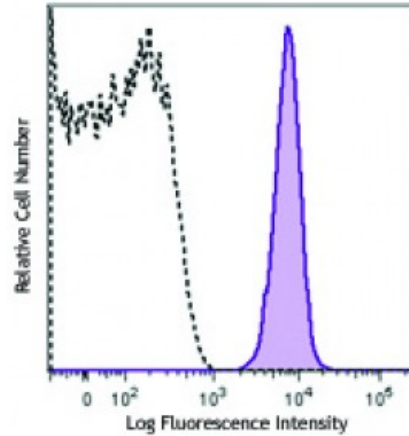
Reactivity: Human

Preparation: The antibody was purified by affinity chromatography and conjugated with PE/Cy7 under optimal conditions. The solution is free of unconjugated PE/Cy7 and unconjugated antibody.

Formulation: Phosphate-buffered solution, pH 7.2, containing 0.09% sodium azide and 0.2% (w/v) BSA (origin USA).

Workshop Number: VII 70312

Concentration: Lot-specific



Human red blood cells were stained with anti-human CD235a (clone HI264) PE/Cy7 (filled histogram) or mouse IgG2a, κ PE/Cy7 isotype control (open histogram).

Applications:

Applications: Flow Cytometry

Recommended Usage: Each lot of this antibody is quality control tested by immunofluorescent staining with flow cytometric analysis. For flow cytometric staining, the suggested use of this reagent is 5 microL per million cells or 5 microL per 100 microL of whole blood. It is recommended that the reagent be titrated for optimal performance for each application.

Application References: 1. Mason D, *et al.* Eds. 2002. Leucocyte Typing VII:White Cell Differentiation Antigens. Oxford University Press. (FC)

Description: CD235a (Glycophorin A) is member of the glycophorin A family. It is a type I sialoglycoprotein with a molecular weight of 10 kD, present in the cell membrane as a homodimer. Glycophorin A is expressed by erythroid precursors and erythrocytes. It carries the antigen determinants for the MNS blood groups and has been proposed to be an inhibitor of hemagglutination and hemolysis. Glycophorin A binds siglec 5, the erythrocyte binding antigen (EBA-175) of *P. falciparum* and some viruses, including influenza virus and hepatitis A virus.

Antigen References:

1. Reid ME. 2009. *Immunohematology* 25:95.
2. Palacajornsuk P. 2006. *Immunohematology* 22:171.
3. Pasvol G. 2003. *Trends Parasitol.* 19:430.
4. Takakuwa Y. 2001. *Curr. Opin. Hematol.* 8:80.