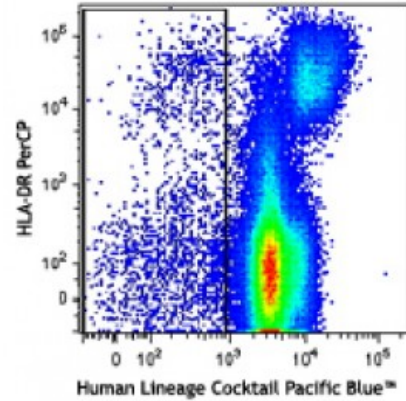


Pacific Blue™ anti-human Lineage Cocktail (CD3, CD14, CD16, CD19, CD20, CD56)

Catalog # / Size: 2344025 / 50 tests
Clone: UCHT1, HCD14, 3G8, HIB19, 2H7, HCD56
Isotype: Mouse IgG1, κ, Mouse IgG2b, κ
Reactivity: Human
Preparation: The antibody was purified by affinity chromatography and conjugated with Pacific Blue™ under optimal conditions. The solution is free of unconjugated Pacific Blue™.
Formulation: Phosphate-buffered solution, pH 7.2, containing 0.09% sodium azide and 0.2% (w/v) BSA (origin USA).
Concentration: Lot-specific

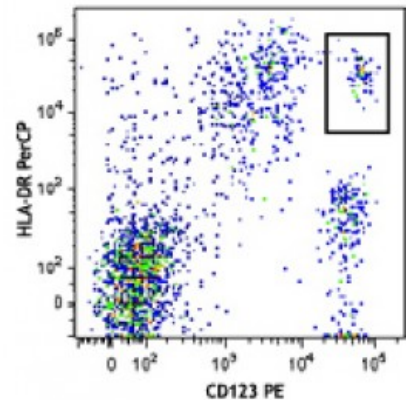


Human peripheral blood leukocytes were stained with Pacific Blue™ anti-Human Lineage Cocktail and HLA-DR PerCP.

Applications:

Applications: Flow Cytometry
Recommended Usage: Each lot of this antibody is quality control tested by immunofluorescent staining with flow cytometric analysis. For flow cytometric staining, the suggested use of this reagent is 20 microL per million cells or 20 microL per 100 microL of whole blood. It is recommended that the reagent be titrated for optimal performance for each application.

* Pacific Blue™ has a maximum emission of 455 nm when it is excited at 405 nm. Prior to using Pacific Blue™ conjugate for flow cytometric analysis, please verify your flow cytometer's capability of exciting and detecting the fluorochrome.



Human peripheral blood leukocytes co-stained with CD123 PE and HLA-DR PerCP (gated on the Lineage negative/dim cell population).

Application References: 1. Zola H, *et al.* Eds. 2007. Leukocyte and Stromal Cell Molecules. New Jersey. (FC)

Description: This anti-Human Lineage Cocktail is optimized for the detection of human peripheral blood T cells, B cells, NK cells, monocytes, and neutrophils. In combination with other markers, it can be used for studies of dendritic cells and/or basophils. This cocktail is composed of CD3, CD14, CD16, CD19, CD20, and CD56. CD3 is the antigen mainly found on T cells; CD14 is expressed on monocytes/macrophages and at low levels on neutrophils and eosinophils; CD16 is expressed on NK cells, activated monocytes/macrophages, and neutrophils; CD19 and CD20 are on B cells; CD56 is located on NK cells.

