

PE/Dazzle™ 594 anti-human Siglec-8

Catalog # / Size: 2335545 / 25 tests
2335550 / 100 tests

Clone: 7C9

Isotype: Mouse IgG1, κ

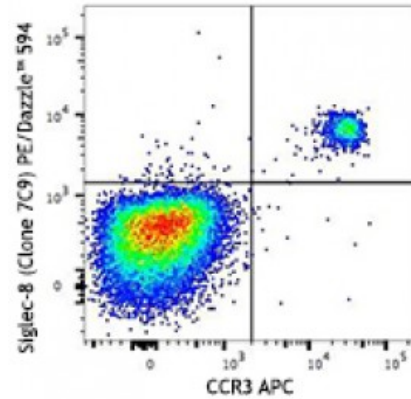
Immunogen: Recombinant Siglec-8 fused to human IgG Fc

Reactivity: Human

Preparation: The antibody was purified by affinity chromatography and conjugated with PE/Dazzle™ 594 under optimal conditions. The solution is free of unconjugated PE/Dazzle™ 594 and unconjugated antibody.

Formulation: Phosphate-buffered solution, pH 7.2, containing 0.09% sodium azide and 0.2% (w/v) BSA (origin USA).

Concentration: Lot-specific



Human peripheral blood leukocytes were stained with CCR3 APC and Siglec-8 (clone 7C9) PE/Dazzle™ 594 (top) or mouse IgG1, κ PE/Dazzle™ 594 isotype control (bottom). Data shown was gated on the granulocyte cell population.

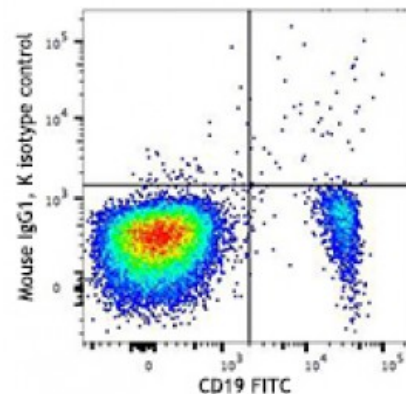
Applications:

Applications: Flow Cytometry

Recommended Usage: Each lot of this antibody is quality control tested by immunofluorescent staining with flow cytometric analysis. For flow cytometric staining, the suggested use of this reagent is 5 microL per million cells or 5 microL per 100 microL of whole blood. It is recommended that the reagent be titrated for optimal performance for each application.

* PE/Dazzle™ 594 has a maximum excitation of 566 nm and a maximum emission of 610 nm.

This product is subject to proprietary rights of Sirigen Inc. and is made and sold under license from Sirigen Inc. The purchase of this product conveys to the buyer a non-transferable right to use the purchased product for research purposes only. This product may not be resold or incorporated in any manner into another product for resale. Any use for therapeutics or diagnostics is strictly prohibited. This product is covered by U.S. Patent(s), pending patent applications and foreign equivalents.



Application 1. Floyd H, *et al.* 2000. *J. Biol. Chem.* 275:861.

References: 2. Wen T, *et al.* 2014. *J Immunol.* 192:5481. [PubMed](#)

Description: Siglec-8 is a lectin specific for 6'-sulfo-sLe^x and a member of the Ig-superfamily. It is expressed almost exclusively in eosinophils; however, basophils and mast cells can express it to a lower degree. Siglec-8 is a 54 kD transmembranal protein; the extracellular domain has one V-set Ig-like domain and two C2-set domains. The cytoplasmic domain has two immunoreceptor tyrosine-based inhibitor motifs (ITIM) that recruit SH2-family phosphatases after tyrosine phosphorylation. There are reports that siglec-8 inhibits the release of histamine and prostaglandin D2 mediated by the IgEFcR. This molecule is also involved in the induction of apoptosis.

Antigen References:

1. Bochner BS, *et al.* 2009. *Clin. Exp. Allergy.* 39:317.
2. Hudson SA, *et al.* 2009. *J. Pharmacol. Exp. Ther.* 330:608.
3. Nutku E, *et al.* 2005. *Biochem. Biophys. Res. Commun.* 336:918.