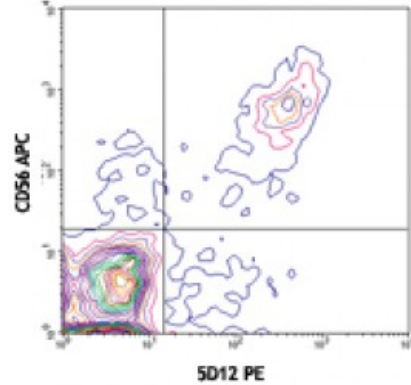


PE anti-human NKp80

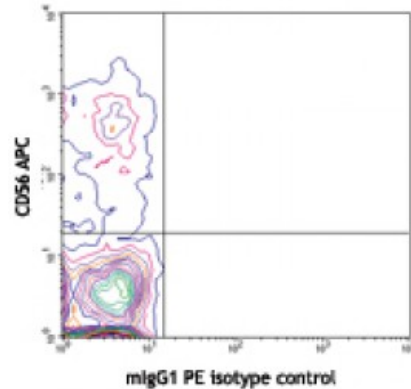
Catalog # / Size: 2333530 / 100 tests
Clone: 5D12
Isotype: Mouse IgG1, κ
Immunogen: Recombinant ectodomain of human NKp80
Reactivity: Human
Preparation: The antibody was purified by affinity chromatography, and conjugated with PE under optimal conditions. The solution is free of unconjugated PE and unconjugated antibody.
Formulation: Phosphate-buffered solution, pH 7.2, containing 0.09% sodium azide and 0.2% (w/v) BSA (origin USA).
Concentration: Lot-specific



Human peripheral blood lymphocytes stained with CD56 (HCD56) APC and 5D12 PE (top) or mouse IgG1, κ PE isotype control (bottom).

Applications:

Applications: Flow Cytometry
Recommended Usage: Each lot of this antibody is quality control tested by immunofluorescent staining with flow cytometric analysis. **Test size products are transitioning from 20 microl to 5 microl per test.** Please check your vial or your CoA to find the suggested use of this reagent per million cells in 100 microl staining volume or per 100 microl of whole blood. It is recommended that the reagent be titrated for optimal performance for each application.



Application References: 1. Welte S, *et al.* 2006. *Nat. Immunol.* 7:1334
 2. Kuttruff S, *et al.* 2009. *Blood* 113:358

Description: NKp80, also known as killer cell lectin-like receptor subfamily F, member 1 (KLRF1), is a type II transmembrane C-type lectin-like receptor. NKp80 is expressed on the cell surface of nearly all NK cells as a homodimer with approximately 80 kD molecular mass. It is also found on a subset of effector memory CD8 T cells and $\gamma\delta$ T cells. NKp80 induces NK-cell mediated cytotoxicity and cytokine production through interaction with its ligand, AICL (activation-induced C-type lectin), which is selectively expressed on myeloid cells.

Antigen References: 1. Kuttruff S, *et al.* 2009. *Blood* 113:358
 2. Vitale M, *et al.* 2001. *Eur. J. Immunol.* 31:233