

Purified anti-human Delta-like protein 4 (DLL4)

Catalog # / Size: 2332510 / 100 µg
2332505 / 25 µg

Clone: MHD4-46

Isotype: Mouse IgG1, κ

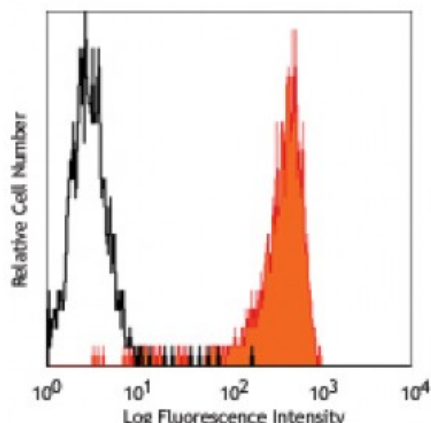
Immunogen: Recombinant human DLL4

Reactivity: Human

Preparation: The antibody was purified by affinity chromatography.

Formulation: Phosphate-buffered solution, pH 7.2, containing 0.09% sodium azide.

Concentration: 0.5



Human DLL4 transfected CHO cells stained with MHD4-46 PE

Applications:

Applications: Flow Cytometry

Recommended Usage: Each lot of this antibody is quality control tested by immunofluorescent staining with flow cytometric analysis. For flow cytometric staining, the suggested use of this reagent is ≤2.0 microg per million cells in 100 microL volume. It is recommended that the reagent be titrated for optimal performance for each application.

Application Notes: Additional reported applications for the relevant formats include: blocking of DLL4 binding to Notch 1 and Notch 4.

Application References: 1. Yamanda S, *et al.* 2009. *Blood* 113:3631.

Description: Delta-like protein 4 (DLL4) is a type I transmembrane protein whose extracellular domain contains a DSL domain and eight tandem EGF repeats. After binding of its ligands Notch 1 and Notch 4, the extracellular and cytoplasmic domains are cleaved and the cytoplasmic domain is translocated into the nucleus. DLL4 is expressed in the vascular endothelium, neural epithelium, adrenal cortex, spleen, and lymph nodes. It is also highly expressed in some types of bladder, breast, and renal carcinomas. DLL4 is critical in vascular development and homeostasis.

Antigen References:

1. Beck RC, *et al.* 2009. *Biol Blood Marrow Transplant.* 15:1026.
2. Mazella J, *et al.* 2008. *Endocrinology.* 149:15.
3. Noguera-Troise I, *et al.* 2006. *Nature* 444:1032.
4. Sugimoto A,