

**PerCP/Cyanine5.5 anti-human CD169 (Sialoadhesin, Siglec-1)**

**Catalog # / Size:** 2330100 / 100 tests  
2330095 / 25 tests

**Clone:** 7-239

**Isotype:** Mouse IgG1,  $\kappa$

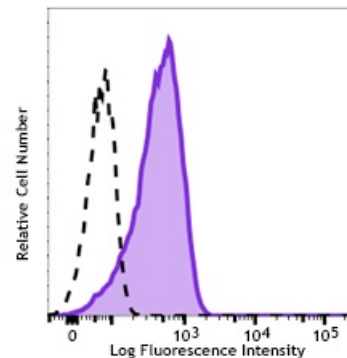
**Immunogen:** Human Rhinovirus (HRV14) infected, monocyte derived-DCs

**Reactivity:** Human

**Preparation:** The antibody was purified by affinity chromatography and conjugated with PerCP/Cyanine5.5 under optimal conditions.

**Formulation:** Phosphate-buffered solution, pH 7.2, containing 0.09% sodium azide and 0.2% (w/v) BSA (origin USA)

**Concentration:** Lot-specific



Human PBMC monocytes were stimulated with IFN- $\gamma$  and TNF- $\alpha$  for 3 days. Then cells were stained with CD169 (Sialoadhesin, Siglec-1) (clone 7-239) PerCP/Cyanine5.5 (filled histogram) or mouse IgG1,  $\kappa$  PerCP/Cyanine5.5 isotype control (open histogram).

**Applications:**

**Applications:** Flow Cytometry

**Recommended Usage:** Each lot of this antibody is quality control tested by immunofluorescent staining with flow cytometric analysis. For flow cytometric staining, the suggested use of this reagent is 5  $\mu$ L per million cells in 100  $\mu$ L staining volume or 5  $\mu$ L per 100  $\mu$ L of whole blood. It is recommended that the reagent be titrated for optimal performance for each application.

\* PerCP/Cyanine5.5 has a maximum absorption of 482 nm and a maximum emission of 690 nm.

**Application Notes:** Additional reported applications (for the relevant formats) include: Western blotting and inhibition of erythrocyte-rosetting with cells expressing CD169.

**Application References:**

1. Kirchberger S, et al. 2005. *J. Immunol.* 175:1145.
2. Schrauf C, et al. 2009. *J. Immunol.* 183:4440.

**Description:** CD169, also known as Siglec-1 and Sialoadhesin (Sn), is a 210 kD type I single membrane-spanning glycoprotein. It is the largest member of the Siglec family, consisting of 1709 amino acids and belonging to the immunoglobulin superfamily. CD169 is expressed by macrophages and dendritic cells. By its affinity to  $\alpha$ 2,3-linked sialic acid, it is involved in macrophage binding to different cell types such as granulocytes, monocytes, NK, B and T cells. Several CD169 counter receptors, such as CD227 on human breast cancer cells, CD43 on T cells and CD206 on macrophages, have been reported.

- Antigen**
- References:**
1. Xiong YS, et al. 2009. *Clin. Biochem.* 42:1057.
  2. Varki A, et al. 2009. *Glycoconj J.* 26:231.
  3. Rempel H, et al. 2008. *PLoS One.* 3:e1967.
  4. Crocker PR, et al. 2001. *Trends Immunol.* 22:337.
  5. Hartnell A, et al. 2001. *Blood* 97:288.