

Brilliant Violet 510™ anti-human CD366 (Tim-3)

Catalog # / Size: 2325145 / 25 tests
2325150 / 100 tests

Clone: F38-2E2

Isotype: Mouse IgG1, κ

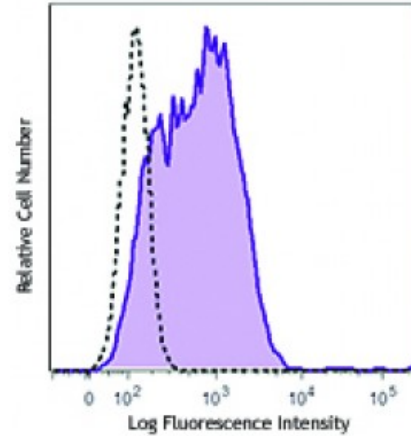
Immunogen: Human Tim-3 fusion protein

Reactivity: Human

Preparation: The antibody was purified by affinity chromatography and conjugated with Brilliant Violet 510™ under optimal conditions. The solution is free of unconjugated Brilliant Violet 510™ and unconjugated antibody.

Formulation: Phosphate-buffered solution, pH 7.2, containing 0.09% sodium azide and BSA (origin USA).

Concentration: Lot-specific



PHA-stimulated (three days) human peripheral blood lymphocytes were stained with anti-human CD366 (clone F38-2E2) Brilliant Violet 510™ (filled histogram) or mouse IgG1, κ Brilliant Violet 510™ isotype control (open histogram).

Applications:

Applications: Flow Cytometry

Recommended Usage: Each lot of this antibody is quality control tested by immunofluorescent staining with flow cytometric analysis. For flow cytometric staining, the suggested use of this reagent is ≤5 microL per million cells or 5 microL per 100 microL of whole blood. It is recommended that the reagent be titrated for optimal performance for each application.

Brilliant Violet 510™ excites at 405 nm and emits at 510 nm. The bandpass filter 510/50 nm is recommended for detection, although filter optimization may be required depending on other fluorophores used. **Be sure to verify that your cytometer configuration and software setup are appropriate for detecting this channel.** Refer to your instrument manual or manufacturer for support. Brilliant Violet 510™ is a trademark of Sirigen Group Ltd.

This product is subject to proprietary rights of Sirigen Inc. and is made and sold under license from Sirigen Inc. The purchase of this product conveys to the buyer a non-transferable right to use the purchased product for research purposes only. This product may not be resold or incorporated in any manner into another product for resale. Any use for therapeutics or diagnostics is strictly prohibited. This product is covered by U.S. Patent(s), pending patent applications and foreign equivalents.

Application Notes: Additional reported applications (for relevant formats of this clone) include: costimulation¹ (clone 2E2 has been shown to enhance T-cell receptor mediated activation and cytokine secretion) and blocking^{2,3}. The LEAF™ purified antibody (Endotoxin <0.1 EU/μg, Azide-Free, 0.2 μm filtered) is recommended for functional assays (Cat. No. 345004). For highly sensitive assays, we recommend Ultra-LEAF™ purified antibody (Cat. No. 345010) with a lower endotoxin limit than standard LEAF™ purified antibodies (Endotoxin <0.01 EU/microg).

Application 1. Hastings WD, *et al.* 2009. *Eur. J. Immunol.* 39:2492. (Costim)

- References:** 2. Jones RB, *et al.* 2008. *J. Exp. Med.* 205:2763. (Block)
3. Klibi J, *et al.* 2009. *Blood* 113:1957. (FC, Block)
-

Description: CD366 (Tim-3) is a transmembrane protein also known as T cell immunoglobulin and mucin domain containing protein-3. Tim-3 is expressed at high levels on activated T cells (preferentially on Th1 cells, monocytes/macrophages, and dendritic cells). Tim-3 has also been shown to exist as a soluble protein. Cells expressing Tim-3 are present at high levels in the CNS of animals at the onset of experimental autoimmune encephalomyelitis (EAE), a disease mediated by lymphocytes secreting Th1-like cytokines. Tim-3 has been proposed to inhibit Th1-mediated immune responses and promote immunological tolerance.

- Antigen**
References: 1. Hafler DA and Kuchroo V. 2008. *J. Exp. Med.* 205:2699.
2. Zhu C, *et al.* 2005. *Nat. Immunol.* 6:1245.
3. Wang F, *et al.* 2009. *Immunobiology* 214:342.