

Spark Blue™ 550 anti-human CD3

Catalog # / Size: 2324260 / 100 tests
2324255 / 25 tests

Clone: SK7

Isotype: Mouse IgG1, κ

Immunogen: Human T cells from a T-ALL patient.

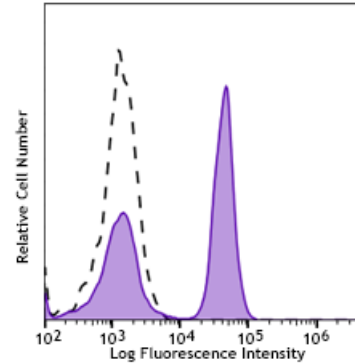
Reactivity: Human, Other

Preparation: The antibody was purified by affinity chromatography and conjugated with Spark Blue™ 550 under optimal conditions.

Formulation: Phosphate-buffered solution, pH 7.2, containing 0.09% sodium azide and 0.2% (w/v) BSA (origin USA).

Workshop Number: HCDM listed

Concentration: Lot-specific



Human peripheral blood lymphocytes were stained with CD3 (clone SK7) Spark Blue™ 550 (filled histogram). Open histogram represents unstained cells.

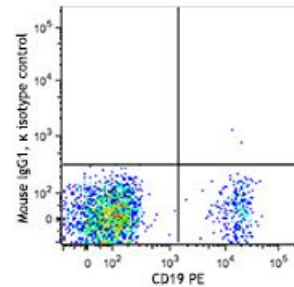
Applications:

Applications: Flow Cytometry

Recommended Usage: Each lot of this antibody is quality control tested by immunofluorescent staining with flow cytometric analysis. For flow cytometric staining, the suggested use of this reagent is 5 µL per million cells in 100 µL staining volume or 5 µL per 100 µL of whole blood. It is recommended that the reagent be titrated for optimal performance for each application.

Application Notes: Additional reported application (for the relevant formats) include: immunohistochemical staining of frozen tissue sections^{4,5,8}, immunofluorescent staining⁶, and Western blotting³.

- Application References:**
1. Kan EA, et al. 1983. *J. Immunol.* 131:536.
 2. Wood GS, et al. 1985. *Am. J. Pathol.* 120:371.
 3. Van Dongen JJM, et al. 1988. *Blood* 71:603. (WB)
 4. Haringman JJ, et al. 2005. *Arthritis Res. Ther.* 7:R862. (IHC)
 5. Carbone A, et al. 1999. *Blood* 93:2319. (IHC)
 6. Goval JJ, et al. 2006. *J. Histochem. Cytochem.* 54:75. (IF)
 7. Rutjens E, et al. 2007. *J. Immunol.* 178:1702.
 8. Kap Y, et al. 2009. *J. Histochem. Cytochem.* 57:1159. (IHC)
 9. Yoshino N, et al. 2000. *Exp. Anim. (Tokyo)* 49:97. (FC)



Human peripheral blood lymphocytes were stained with anti-human CD4 FITC and anti-human CD25 (clone M-A251) Spark YG™ 581 (left) or anti-human CD4 FITC only (right).

Description: CD3 ϵ is a 20 kD chain of the CD3/T-cell receptor (TCR) complex, which is composed of two CD3 ϵ , one CD3 γ , one CD3 δ , one CD3 ζ (CD247), and a T-cell receptor (α/β or γ/δ) heterodimer. It is found on all mature T cells, NK T cells, and some thymocytes. CD3, also known as T3, is a member of the immunoglobulin superfamily that plays a role in antigen recognition, signal transduction, and T cell activation.

Antigen References:

1. Barclay N, *et al.* 1993. The Leucocyte FactsBook. Academic Press. San Diego.
2. Beverly P, *et al.* 1981. *Eur. J. Immunol.* 11:329.
3. Lanier L, *et al.* 1986. *J. Immunol.* 137:2501.