

Brilliant Violet 711™ anti-human CD3

Catalog # / Size: 2324185 / 25 tests
2324190 / 100 tests

Clone: SK7

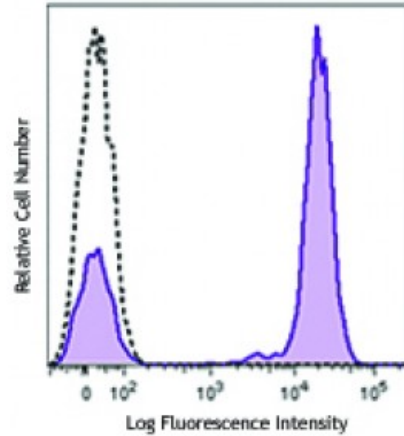
Isotype: Mouse IgG1, κ

Reactivity: Human

Preparation: The antibody was purified by affinity chromatography and conjugated with Brilliant Violet 711™ under optimal conditions. The solution is free of unconjugated Brilliant Violet 711™ and unconjugated antibody.

Formulation: Phosphate-buffered solution, pH 7.2, containing 0.09% sodium azide and BSA (origin USA).

Concentration: Lot-specific



Human peripheral blood lymphocytes were stained with CD3 (clone SK7) Brilliant Violet 711™ (filled histogram) or mouse IgG1, κ Brilliant Violet 711™ isotype control (open histogram).

Applications:

Applications: Flow Cytometry

Recommended Usage: Each lot of this antibody is quality control tested by immunofluorescent staining with flow cytometric analysis. For flow cytometric staining, the suggested use of this reagent is ≤5 microL per million cells or 5 microL per 100 microL of whole blood. It is recommended that the reagent be titrated for optimal performance for each application.

Brilliant Violet 711™ excites at 405 nm and emits at 711 nm. The bandpass filter 710/50 nm is recommended for detection, although filter optimization may be required depending on other fluorophores used. **Be sure to verify that your cytometer configuration and software setup are appropriate for detecting this channel.** Refer to your instrument manual or manufacturer for support. Brilliant Violet 711™ is a trademark of Sirigen Group Ltd.

This product is subject to proprietary rights of Sirigen Inc. and is made and sold under license from Sirigen Inc. The purchase of this product conveys to the buyer a non-transferable right to use the purchased product for research purposes only. This product may not be resold or incorporated in any manner into another product for resale. Any use for therapeutics or diagnostics is strictly prohibited. This product is covered by U.S. Patent(s), pending patent applications and foreign equivalents.

Application Notes: Additional reported application (for the relevant formats) include: immunohistochemical staining of frozen tissue sections^{4,5,8}, immunofluorescent staining⁶, and Western blotting³.

- Application References:**
1. Kan EA, *et al.* 1983. *J. Immunol.* 131:536.
 2. Wood GS, *et al.* 1985. *Am. J. Pathol.* 120:371.
 3. Van Dongen JJM, *et al.* 1988. *Blood* 71:603. (WB)
 4. Haringman JJ, *et al.* 2005. *Arthritis Res. Ther.* 7:R862. (IHC)
 5. Carbone A, *et al.* 1999. *Blood* 93:2319. (IHC)
 6. Goval JJ, *et al.* 2006. *J. Histochem. Cytochem.* 54:75. (IF)

7. Rutjens E, *et al.* 2007. *J. Immunol.* 178:1702.
 8. Kap Y, *et al.* 2009. *J. Histochem. Cytochem.* 57:1159. (IHC)
 9. Yoshino N, *et al.* 2000. *Exp. Anim. (Tokyo)* 49:97. (FC)
-

Description: CD3 ϵ is a 20 kD chain of the CD3/T-cell receptor (TCR) complex, which is composed of two CD3 ϵ , one CD3 γ , one CD3 δ , one CD3 ζ (CD247), and a T-cell receptor (α/β or γ/δ) heterodimer. It is found on all mature T cells, NK T cells, and some thymocytes. CD3, also known as T3, is a member of the immunoglobulin superfamily that plays a role in antigen recognition, signal transduction, and T cell activation.

Antigen
References:

1. Barclay N, *et al.* 1993. *The Leucocyte FactsBook*. Academic Press. San Diego.
2. Beverly P, *et al.* 1981. *Eur. J. Immunol.* 11:329.
3. Lanier L, *et al.* 1986. *J. Immunol.* 137:2501.