

**PerCP anti-human CD3**

**Catalog # / Size:** 2324070 / 100 tests  
2324065 / 25 tests

**Clone:** SK7

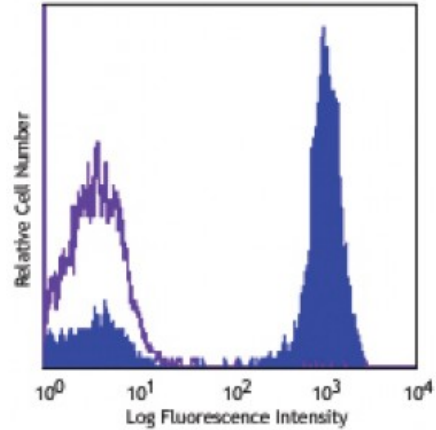
**Isotype:** Mouse IgG1,  $\kappa$

**Reactivity:** Human

**Preparation:** The antibody was purified by affinity chromatography, and conjugated with PerCP under optimal conditions. The solution is free of unconjugated PerCP and unconjugated antibody.

**Formulation:** Phosphate-buffered solution, pH 7.2, containing 0.09% sodium azide and 0.2% (w/v) BSA (origin USA).

**Concentration:** Lot-specific



Human peripheral blood lymphocytes stained with SK7 PerCP

**Applications:**

- Applications:** Flow Cytometry
- Recommended Usage:** Each lot of this antibody is quality control tested by immunofluorescent staining with flow cytometric analysis. For flow cytometric staining, the suggested use of this reagent is 5 microL per million cells or 5 microL per 100 microL of whole blood. It is recommended that the reagent be titrated for optimal performance for each application.
- Application Notes:** Additional reported application (for the relevant formats) include: immunohistochemical staining of frozen tissue sections<sup>4,5,8</sup>, immunofluorescent staining<sup>6</sup>, and Western blotting<sup>3</sup>.
- Application References:**
  1. Kan EA, *et al.* 1983. *J. Immunol.* 131:536.
  2. Wood GS, *et al.* 1985. *Am. J. Pathol.* 120:371.
  3. Van Dongen JJM, *et al.* 1988. *Blood* 71:603. (WB)
  4. Haringman JJ, *et al.* 2005. *Arthritis Res. Ther.* 7:R862. (IHC)
  5. Carbone A, *et al.* 1999. *Blood* 93:2319. (IHC)
  6. Goyal JJ, *et al.* 2006. *J. Histochem. Cytochem.* 54:75. (IF)
  7. Rutjens E, *et al.* 2007. *J. Immunol.* 178:1702.
  8. Kap Y, *et al.* 2009. *J. Histochem. Cytochem.* 57:1159. (IHC)
  9. Yoshino N, *et al.* 2000. *Exp. Anim. (Tokyo)* 49:97. (FC)
  10. Srinivasan A, *et al.* 2014. *Biol Blood Marrow Transplant.* 20:1224. [PubMed](#)
  11. Gooneratne SL, *et al.* 2015. *J Virol.* 89:97. [PubMed](#)
  12. Madhavi V, *et al.* 2015. *J Infect Dis.* 211:529. [PubMed](#)

**Description:** CD3 $\epsilon$  is a 20 kD chain of the CD3/T-cell receptor (TCR) complex, which is composed of two CD3 $\epsilon$ , one CD3 $\gamma$ , one CD3 $\delta$ , one CD3 $\zeta$  (CD247), and a T-cell receptor ( $\alpha/\beta$  or  $\gamma/\delta$ ) heterodimer. It is found on all mature T cells, NK T cells, and some thymocytes. CD3, also known as T3, is a member of the immunoglobulin superfamily that plays a role in antigen recognition, signal transduction, and T cell activation.

**Antigen References:**

1. Barclay N, *et al.* 1993. *The Leucocyte FactsBook.* Academic Press. San Diego.
2. Beverly P, *et al.* 1981. *Eur. J. Immunol.* 11:329.
3. Lanier L, *et al.* 1986. *J. Immunol.* 137:2501.