

**PE/Cy7 anti-human CD272 (BTLA)**

**Catalog # / Size:** 2322575 / 25 tests  
2322580 / 100 tests

**Clone:** MIH26

**Isotype:** Mouse IgG2a, κ

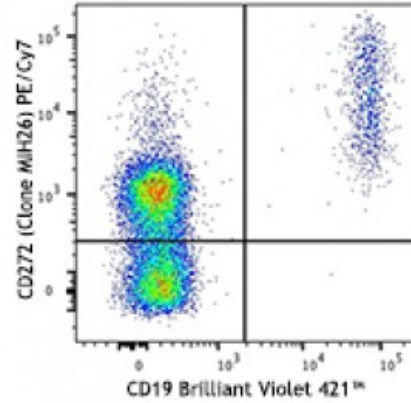
**Immunogen:** Human BTLA transfected cells

**Reactivity:** Human

**Preparation:** The antibody was purified by affinity chromatography and conjugated with PE/Cy7 under optimal conditions. The solution is free of unconjugated PE/Cy7 and unconjugated antibody.

**Formulation:** Phosphate-buffered solution, pH 7.2, containing 0.09% sodium azide and 0.2% (w/v) BSA (origin USA).

**Concentration:** Lot-specific

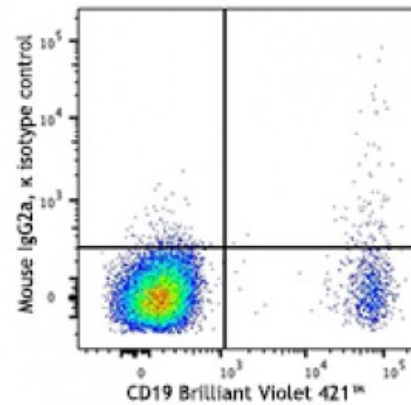


Human peripheral blood lymphocytes were stained with CD19 Brilliant Violet 421™ and CD272 (clone MIH26) PE/Cy7 (top) or mouse IgG2a, κ PE/Cy7 isotype control (bottom).

**Applications:**

**Applications:** Flow Cytometry

**Recommended Usage:** Each lot of this antibody is quality control tested by immunofluorescent staining with flow cytometric analysis. For flow cytometric staining, the suggested use of this reagent is 5 microL per million cells or 5 microL per 100 microL of whole blood. It is recommended that the reagent be titrated for optimal performance for each application.



This product is subject to proprietary rights of Sirigen Inc. and is made and sold under license from Sirigen Inc. The purchase of this product conveys to the buyer a non-transferable right to use the purchased product for research purposes only. This product may not be resold or incorporated in any manner into another product for resale. Any use for therapeutics or diagnostics is strictly prohibited. This product is covered by U.S. Patent(s), pending patent applications and foreign equivalents.

**Application Notes:** Additional reported applications (for the relevant formats) include: inhibition of T cell proliferation and cytokine production<sup>1</sup>. Clone MIH26 has agonistic activity on BTLA, resulting in the inhibition of activation.

- Application** 1. Otsuki N, *et al.* 2006. *Biochem. Bioph. Res. Co.* 344:1121.  
**References:** 2. Okano M, *et al.* 2008. *Clin. Exp. Allergy* 38:1891.
- 

**Description:** B and T lymphocyte attenuator (BTLA) is an Ig superfamily coinhibitory receptor with structural similarity to programmed cell death 1 (PD-1) and CTLA-4. BTLA is expressed on B cells, T cells, macrophages, dendritic cells, NKT cells, and NK cells. Engagement of BTLA by its ligand Herpes Virus Entry Mediator (HVEM) is critical for negatively regulating immune response. The absence of BTLA with HVEM inhibitory interactions leads to increased experimental autoimmune encephalomyelitis severity, enhanced rejection of partially mismatched allografts, an increased CD8<sup>+</sup> memory T cell population, increased severity of colitis, and reduced effectiveness of T regulatory cells. BTLA plays an important role in the induction of peripheral tolerance of both CD4<sup>+</sup> and CD8<sup>+</sup> T cells in vivo. Tolerant T cells have significant up-regulated expression of BTLA compared with effector and naïve T cells. BTLA may cooperate with CTLA-4 and PD-1 to control T cell tolerance and autoimmunity. It has been reported that BTLA may regulate T cell function through binding to B7-H4.

- Antigen** 1. Watanabe N, *et al.* 2003. *Nat. Immunol.* 4:670.  
**References:** 2. Sun Y, *et al.* 2009. *J. Immunol.* 183:1946.  
3. Gonzalez LC, *et al.* 2005. *P. Natl. Acad. Sci. USA* 102:1116.