

FITC anti-human CD34

Catalog # / Size: 2318020 / 100 tests
2318015 / 25 tests

Clone: 561

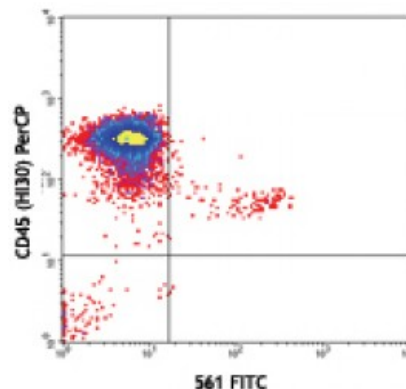
Isotype: Mouse IgG2a, κ

Reactivity: Human

Preparation: The antibody was purified by affinity chromatography, and conjugated with FITC under optimal conditions. The solution is free of unconjugated FITC.

Formulation: Phosphate-buffered solution, pH 7.2, containing 0.09% sodium azide and 0.2% (w/v) BSA (origin USA).

Concentration: Lot-specific



Human peripheral blood mononuclear cells stained with CD34 (clone 561) FITC (top) or FITC mouse IgG2a isotype control (bottom) and CD45 (clone HI30) PerCP (gated on CD14⁻ cell population).

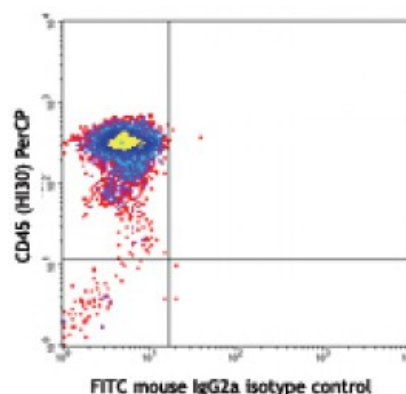
Applications:

Applications: Flow Cytometry

Recommended Usage: Each lot of this antibody is quality control tested by immunofluorescent staining with flow cytometric analysis. **Test size products are transitioning from 20 microL to 5 microL per test.** Please check your vial or your CoA to find the suggested use of this reagent per million cells in 100 microL staining volume or per 100 microL of whole blood. It is recommended that the reagent be titrated for optimal performance for each application.

Application Notes: The 561 antibody recognizes a class III group epitope, which is resistant to sialidase/glycolyprotease and chymopapain treatment.

Application References: 1. Croockewit AJ, *et al.* 1998. *Scand. J. Immunol.* 47:82.
2. Rosenzweig M, *et al.* 2001. *J. Med. Primatol.* 30:36.



Description: CD34, also known as gp105-120, is a type I monomeric sialomucin-like glycoprophosphoprotein with an approximate molecular weight of 105-120 kD. It is selectively expressed on the majority of hematopoietic stem/progenitor cells, bone marrow stromal cells, capillary endothelial cells, embryonic fibroblasts, and some nervous tissue. CD34 is a commonly used marker for identifying human hematopoietic stem/progenitor cells. Based on different sensitivities, four groups of epitopes of CD34 have been described. CD34 mediates cell adhesion and lymphocytes homing through binding to L-selectin and E-selectin ligands.

