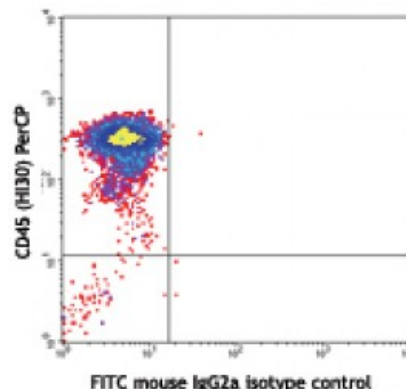


Purified anti-human CD34

Catalog # / Size: 2318010 / 100 µg
Clone: 561
Isotype: Mouse IgG2a, κ
Reactivity: Human
Preparation: The antibody was purified by affinity chromatography.
Formulation: Phosphate-buffered solution, pH 7.2, containing 0.09% sodium azide.
Concentration: 0.5



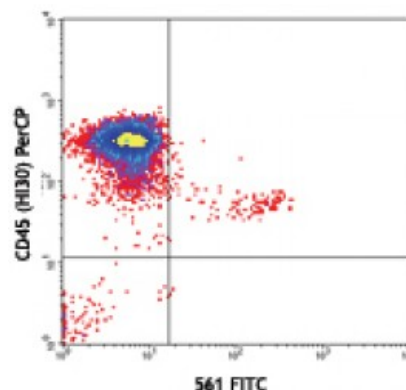
Human peripheral blood mononuclear cells stained with 561 FITC (lower panel) or FITC mouse IgG2a isotype control (upper panel) and CD45 (HI30) PerCP (gated on CD14⁻ cell population)

Applications:

Applications: Flow Cytometry
Recommended Usage: Each lot of this antibody is quality control tested by immunofluorescent staining with flow cytometric analysis. For flow cytometric staining, the suggested use of this reagent is ≤2.0 microg per million cells in 100 microL volume. It is recommended that the reagent be titrated for optimal performance for each application.

Application Notes: The 561 antibody recognizes a class III group epitope, which is resistant to sialidase/glycolyprotease and chymopapain treatment.

Application References: 1. Croockewit AJ, *et al.* 1998. *Scand. J. Immunol.* 47:82.
 2. Rosenzweig M, *et al.* 2001. *J. Med. Primatol.* 30:36.



Description: CD34, also known as gp105-120, is a type I monomeric sialomucin-like glycoposphoprotein with an approximate molecular weight of 105-120 kD. It is selectively expressed on the majority of hematopoietic stem/progenitor cells, bone marrow stromal cells, capillary endothelial cells, embryonic fibroblasts, and some nervous tissue. CD34 is a commonly used marker for identifying human hematopoietic stem/progenitor cells. Based on different sensitivities, four groups of epitopes of CD34 have been described. CD34 mediates cell adhesion and lymphocytes homing through binding to L-selectin and E-selectin ligands.