

APC anti-human HLA-A2

Catalog # / Size: 2316540 / 100 tests
2316535 / 25 tests

Clone: BB7.2

Isotype: Mouse IgG2b, κ

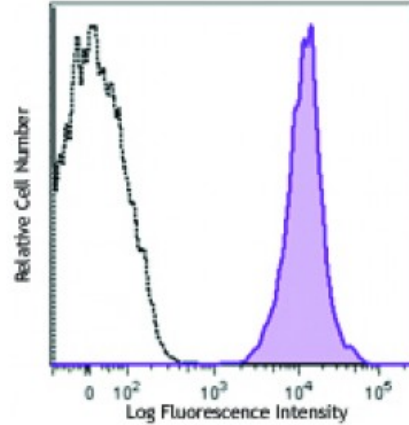
Immunogen: Papain solubilized HLA-A2

Reactivity: Human

Preparation: The antibody was purified by affinity chromatography and conjugated with APC under optimal conditions. The solution is free of unconjugated APC and unconjugated antibody.

Formulation: Phosphate-buffered solution, pH 7.2, containing 0.09% sodium azide and 0.2% (w/v) BSA (origin USA).

Concentration: Lot-specific



Peripheral blood lymphocytes from HLA-A2 positive (top) and HLA-A2 negative (bottom) donors were stained with anti-human HLA-A2 (clone BB7.2) APC (filled histograms) or mouse IgG2b APC isotype control (open histograms).

Applications:

Applications: Flow Cytometry

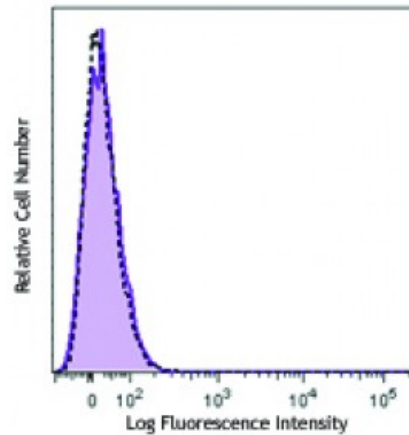
Recommended Usage: Each lot of this antibody is quality control tested by immunofluorescent staining with flow cytometric analysis. For flow cytometric staining, the suggested use of this reagent is 5 microL per million cells or 5 microL per 100 microL of whole blood. It is recommended that the reagent be titrated for optimal performance for each application.

Application Notes: The BB7.2 antibody recognizes human leukocyte antigen (HLA) A2 which is a subset of MHC-class I molecules encoded by A*02 alleles.

Additional reported applications (for the relevant formats) include:
immunoprecipitation³.

Application References:

1. Brodsky FM, *et al.* 1979. *Immunol. Rev.* 47:3.
2. Parham P and Brodsky FM. *et al.* 1981. *Hum. Immunol.* 3:277.
3. Lubben NB, *et al.* 2007. *Mol Biol Cell.* 18:3351. (IP)



Description: HLA-A2 is most common in Northern Asia and North America populations. MHC class I antigens associated with β 2-microglobulin are expressed by all human nucleated cells. MHC class I molecules are involved in presentation of antigens to CD8⁺ T cells, playing an important role in cell-mediated immune responses and tumor surveillance.

