

**FITC anti-human HLA-A2**

**Catalog # /** 2316515 / 25 tests  
**Size:** 2316520 / 100 tests

**Clone:** BB7.2

**Isotype:** Mouse IgG2b,  $\kappa$

**Immunogen:** Papain solubilized HLA-A2

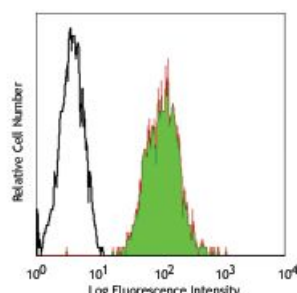
**Reactivity:** Human

**Preparation:** The antibody was purified by affinity chromatography, and conjugated with FITC under optimal conditions.

**Formulation:** Phosphate-buffered solution, pH 7.2, containing 0.09% sodium azide and BSA (origin USA).

**Workshop Number:** IV T-164

**Concentration:** Lot-specific



HLA-A2+ (top) and HLA-A2- (bottom) donors' peripheral blood lymphocytes stained with BB7.2 FITC

**Applications:**

**Applications:** Flow Cytometry

**Recommended Usage:** Each lot of this antibody is quality control tested by immunofluorescent staining with flow cytometric analysis.

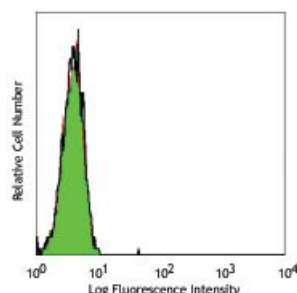
**Test size products are transitioning from 20  $\mu$ l to 5  $\mu$ l per test.** Please check your vial or your CoA to find the suggested use of this reagent per million cells in 100  $\mu$ l staining volume or per 100  $\mu$ l of whole blood. It is recommended that the reagent be titrated for optimal performance for each application.

**Application Notes:** The BB7.2 antibody recognizes human leukocyte antigen (HLA) A2 which is a subset of MHC-class I molecules encoded by A\*02 alleles.

Additional reported applications (for the relevant formats) include: immunoprecipitation<sup>3</sup>.

**Application References:**

1. Brodsky FM, et al. 1979. *Immunol. Rev.* 47:3.
2. Parham P and Brodsky FM. et al. 1981. *Hum. Immunol.* 3:277.
3. Lubben NB, et al. 2007. *Mol Biol Cell.* 18:3351. (IP)



**Description:** HLA-A2 is most common in Northern Asia and North America populations. MHC class I antigens associated with  $\beta$ 2-microglobulin are expressed by all human nucleated cells. MHC class I molecules are involved in presentation of antigens to CD8<sup>+</sup> T cells, playing an important role in cell-mediated immune responses and tumor surveillance.

- Antigen** 1. Neil Barclay A, et al. 1997. *The Leucocyte Antigen Facts Book:Second Edition*. Page 238
- References:** 2. Killeen A, et al. 1987. *EMBO J.* 6:4029.
3. Thurman EC, et al. 1998. *Intl. Immunol.* 10:691.
4. Onami TM, et al. 2002. *J. Immunol.* 168:6022.
5. Tong J, et al. 2004. *J. Exp. Med.* 199:1277.
6. Jones AT, et al. 1994. *J. Immunol.* 153:3426.