

Alexa Fluor® 700 anti-human CD7

Catalog # / Size: 2315625 / 25 tests
2315630 / 100 tests

Clone: CD7-6B7

Isotype: Mouse IgG2a, κ

Immunogen: KG1a cell line

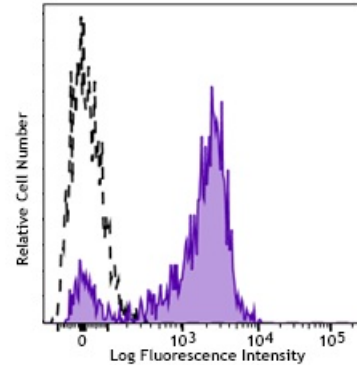
Reactivity: Human

Preparation: The antibody was purified by affinity chromatography and conjugated with Alexa Fluor® 700 under optimal conditions. The solution is free of unconjugated Alexa Fluor® 700.

Formulation: Phosphate-buffered solution, pH 7.2, containing 0.09% sodium azide and 0.2% (w/v) BSA (origin USA).

Workshop Number: IV T-164

Concentration: Lot-specific



Human peripheral blood lymphocytes were stained with CD7 (clone CD7-6B7) Alexa Fluor® 700 (filled histogram) or mouse IgG2a, κ Alexa Fluor® 700 isotype control (open histogram).

Applications:

Applications: Flow Cytometry

Recommended Usage: Each lot of this antibody is quality control tested by immunofluorescent staining with flow cytometric analysis. For flow cytometric staining, the suggested use of this reagent is 5 µl per million cells in 100 µl staining volume or 5 µl per 100 µl of whole blood.

* Alexa Fluor® 700 has a maximum emission of 719 nm when it is excited at 633 nm / 635 nm. Prior to using Alexa Fluor® 700 conjugate for flow cytometric analysis, please verify your flow cytometer's capability of exciting and detecting the fluorochrome.

Application Notes: Additional reported (for the relevant formats) applications include proteogenomics².

- Application References:**
1. Knapp W, et al. 1989. *Leucocyte Typing IV:White Cell Differentiation Antigens*. Oxford University Press.
 2. Peterson VM, et al. 2017. *Nat. Biotechnol.* 35:936. (PG)

Description: CD7 is a 40 kD type I transmembrane glycoprotein also known as gp40. It is a member of the immunoglobulin superfamily found on T cells, NK cells, thymocytes, hematopoietic progenitors, and monocytes (weakly). CD7 is also expressed on acute lymphocytic leukemia (ALL) and some acute myeloid leukemia (AML) cells. CD7 crosslinking induces a calcium flux in T lymphocytes, presumably as a result of cytoplasmic domain association with PI3-kinase. CD7 costimulation can induce cytokine secretion and modulate cellular adhesion.

- Antigen References:**
1. Barclay N, et al. 1993. *The Leucocyte Antigen FactsBook*. Academic Press Inc. San Diego.
 2. Stillwell R, et al. 2001. *Immunol. Res.* 24:31.
 3. Rabinowich H, et al. 1994. *J. Immunol.* 152:517.