

Alexa Fluor® 647 anti-human CD305 (LAIR1)

Catalog # / Size: 2314005 / 25 tests
2314010 / 100 tests

Clone: NKTA255

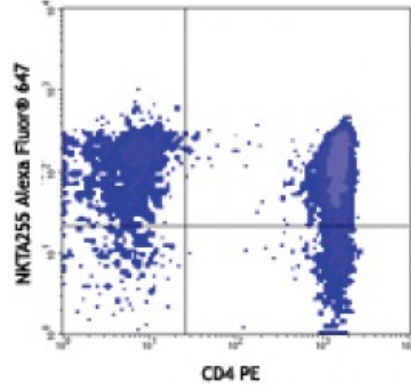
Isotype: Mouse IgG1

Reactivity: Human

Preparation: The antibody was purified by affinity chromatography, and conjugated with Alexa Fluor® 647 under optimal conditions.

Formulation: Phosphate-buffered solution, pH 7.2, containing 0.09% sodium azide and 0.2% (w/v) BSA (origin USA).

Concentration: Lot-specific



CD3+ human peripheral blood lymphocytes stained with NKTA255 Alexa Fluor® 647 and CD4 (RPA-T4) PE

Applications:

Applications: Flow Cytometry

Recommended Usage: Each lot of this antibody is quality control tested by immunofluorescent staining with flow cytometric analysis. For flow cytometric staining, the suggested use of this reagent is 5 microL per million cells or 5 microL per 100 microL of whole blood. It is recommended that the reagent be titrated for optimal performance for each application.

* Alexa Fluor® 647 has a maximum emission of 668 nm when it is excited at 633nm / 635nm.

Application References: 1. Poggi A, *et al.* 1995. *Eur. J. Immunol.* 25:369

Description: CD305, also known as LAIR-1 (leukocyte-associated Ig-like receptor-1), is a 40 kD type I transmembrane glycoprotein. LAIR-1 and LAIR-2 are the only members of the LAIR family in the Ig superfamily. LAIR-1 is an inhibitory molecule characterized by ITIMs in the cytoplasmic domain and collagen ligands. CD305 is expressed on NK cells, T cells, B cells, monocytes, dendritic cells, eosinophils, basophils and mast cells. LAIR-1 functions in the inhibition of cell cytotoxicity, cell activation, proliferation and differentiation.

Antigen References: 1. Meyaard L, *et al.* 2008. *J. Leukoc. Biol.* 83:799
2. Lebbink RJ, *et al.* 2006. *J. Exp. Med.* 203:1419