

PerCP/Cy5.5 anti-human HLA-E

Catalog # / Size: 2313050 / 100 tests
2313045 / 25 tests

Clone: 3D12

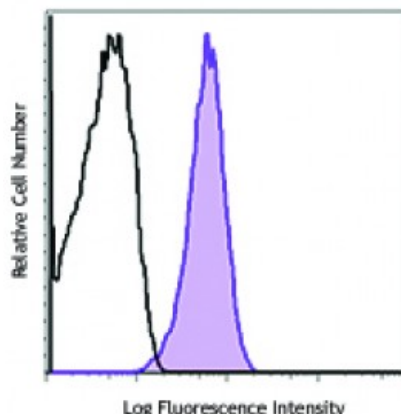
Isotype: Mouse IgG1, κ

Reactivity: Human

Preparation: The antibody was purified by affinity chromatography and conjugated with PerCP/Cy5.5 under optimal conditions. The solution is free of unconjugated PerCP/Cy5.5 and unconjugated antibody.

Formulation: Phosphate-buffered solution, pH 7.2, containing 0.09% sodium azide and 0.2% (w/v) BSA (origin USA).

Concentration: 0.5



Human peripheral blood lymphocytes were stained with HLA-E (clone 3D12) PerCP/Cy5.5 (filled histogram) or mouse IgG1, κ PerCP/Cy5.5 isotype control (open histogram).

Applications:

Applications: Flow Cytometry

Recommended Usage: Each lot of this antibody is quality control tested by immunofluorescent staining with flow cytometric analysis. For flow cytometric staining, the suggested use of this reagent is 5 microL per million cells or 5 microL per 100 microL of whole blood. It is recommended that the reagent be titrated for optimal performance for each application.

* PerCP/Cy5.5 has a maximum absorption of 482 nm and a maximum emission of 690 nm.

- Application References:**
1. Lee N, *et al.* 1998. *Proc. Natl. Acad. Sci. USA.* 95:5199.
 2. Wooden SL, *et al.* 2005. *J. Immunol.* 175:1383.
 3. Monaco EL, *et al.* 2008. *J. Immunol.* 181:5442.
 4. Corrah TW, *et al.* 2011. *J. Virol.* 85:3367. [PubMed](#)

Description: HLA-E is a non-classical MHC class I (MHC-Ib) molecule. It is characterized by limited polymorphism and ubiquitous expression. HLA-E, as other MHC-I molecules, is heterodimerized with β 2-microglobulin. HLA-E interacts with CD94/NKG2 receptor to regulate NK cell cytotoxic activities.

- Antigen References:**
1. Sullivan LC, *et al.* 2008. *Tissue Antigen.* 72:415.
 2. Koller BH, *et al.* 1988. *J. Immunol.* 141:897.