

**PE/Cy7 anti-human HLA-E**

**Catalog # / Size:** 2313040 / 100 tests  
2313035 / 25 tests

**Clone:** 3D12

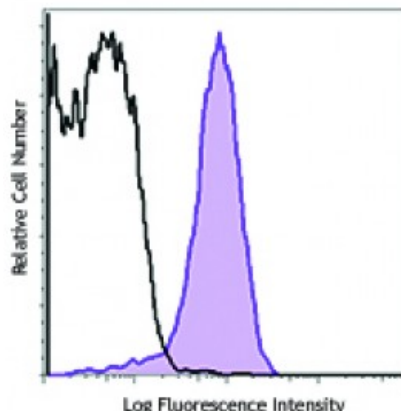
**Isotype:** Mouse IgG1,  $\kappa$

**Reactivity:** Human

**Preparation:** The antibody was purified by affinity chromatography and conjugated with PE/Cy7 under optimal conditions. The solution is free of unconjugated PE/Cy7 and unconjugated antibody.

**Formulation:** Phosphate-buffered solution, pH 7.2, containing 0.09% sodium azide and 0.2% (w/v) BSA (origin USA).

**Concentration:** Lot-specific



Human peripheral blood lymphocytes were stained with HLA-E (clone 3D12) PE/Cy7 (filled histogram) or mouse IgG1,  $\kappa$  PE/Cy7 isotype control (open histogram).

**Applications:**

**Applications:** Flow Cytometry

**Recommended Usage:** Each lot of this antibody is quality control tested by immunofluorescent staining with flow cytometric analysis. For flow cytometric staining, the suggested use of this reagent is 5 microL per million cells or 5 microL per 100 microL of whole blood. It is recommended that the reagent be titrated for optimal performance for each application.

- Application References:**
1. Lee N, *et al.* 1998. *Proc. Natl. Acad. Sci. USA.* 95:5199.
  2. Wooden SL, *et al.* 2005. *J. Immunol.* 175:1383.
  3. Monaco EL, *et al.* 2008. *J. Immunol.* 181:5442.
  4. Corrah TW, *et al.* 2011. *J. Virol.* 85:3367. [PubMed](#)
  5. Steindor M, *et al.* 2015. *PLoS One.* 10:19737. [PubMed](#)

**Description:** HLA-E is a non-classical MHC class I (MHC-Ib) molecule. It is characterized by limited polymorphism and ubiquitous expression. HLA-E, as other MHC-I molecules, is heterodimerized with  $\beta$ 2-microglobulin. HLA-E interacts with CD94/NKG2 receptor to regulate NK cell cytotoxic activities.

- Antigen References:**
1. Sullivan LC, *et al.* 2008. *Tissue Antigen.* 72:415.
  2. Koller BH, *et al.* 1988. *J. Immunol.* 141:897.