

PerCP/Cy5.5 anti-human PSMA (FOLH1)

Catalog # / Size: 2312555 / 25 tests
2312560 / 100 tests

Clone: LNI-17

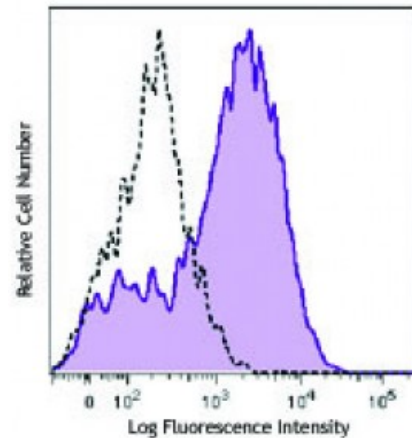
Isotype: Mouse IgG1, κ

Reactivity: Human

Preparation: The antibody was purified by affinity chromatography and conjugated with PerCP/Cy5.5 under optimal conditions. The solution is free of unconjugated PerCP/Cy5.5 and unconjugated antibody.

Formulation: Phosphate-buffered solution, pH 7.2, containing 0.09% sodium azide and 0.2% (w/v) BSA (origin USA).

Concentration: Lot-specific



Human prostatic adenocarcinoma cell line LNCaP cells were stained with PSMA (clone LNI-17) PerCP/Cy5.5 (filled histogram) or mouse IgG1, κ PerCP/Cy5.5 isotype control (open histogram).

Applications:

Applications: Flow Cytometry

Recommended Usage: Each lot of this antibody is quality control tested by immunofluorescent staining with flow cytometric analysis. For flow cytometric staining, the suggested use of this reagent is 5 microL per million cells or 5 microL per 100 microL of whole blood. It is recommended that the reagent be titrated for optimal performance for each application.

* PerCP/Cy5.5 has a maximum absorption of 482 nm and a maximum emission of 690 nm.

Application References: NULL

Description: PSMA (prostate-specific membrane antigen) is a type II transmembrane zinc metallopeptidase, belonging to the M28 peptidase family. It possesses hydrolyzing enzyme activities and is also known as FOLH1 (folate hydrolase 1), GCP2 (glutamate carboxypeptidase II), and NAALADase I (N-acetylated- α -linked acidic dipeptidase I). PSMA is expressed by normal and malignant prostate epithelial cells, by urothelial adenocarcinoma, and vasculatures of other malignancies. It is also found in the nervous system.

Antigen References:

1. Silver DA, *et al.* 1997. *Clin. Cancer Res.* 3:81.
2. Troyer JK, *et al.* 1995. *Int. J. Cancer.* 62:552.
3. Mannweiler S, *et al.* 2009. *Pathol. Oncol. Res.* 15:167.