

**APC anti-human PSMA (FOLH1)**

**Catalog # / Size:** 2312535 / 25 tests  
2312540 / 100 tests

**Clone:** LNI-17

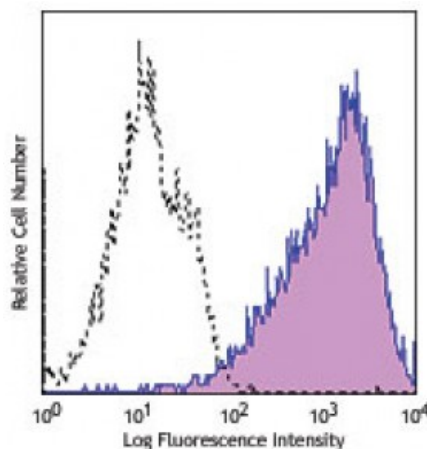
**Isotype:** Mouse IgG1,  $\kappa$

**Reactivity:** Human

**Preparation:** The antibody was purified by affinity chromatography and conjugated with APC under optimal conditions. The solution is free of unconjugated APC and unconjugated antibody.

**Formulation:** Phosphate-buffered solution, pH 7.2, containing 0.09% sodium azide and 0.2% (w/v) BSA (origin USA).

**Concentration:** Lot-specific



Human prostatic adenocarcinoma cell line LNCaP cells were stained with PSMA (clone LNI-17) APC (filled histogram) or mouse IgG1 APC isotype control (open histogram).

**Applications:**

**Applications:** Flow Cytometry

**Recommended Usage:** Each lot of this antibody is quality control tested by immunofluorescent staining with flow cytometric analysis. **Test size products are transitioning from 20 microL to 5 microL per test.** Please check your vial or your CoA to find the suggested use of this reagent per million cells in 100 microL staining volume or per 100 microL of whole blood. It is recommended that the reagent be titrated for optimal performance for each application.

**Application References:** NULL

**Description:** PSMA (prostate-specific membrane antigen) is a type II transmembrane zinc metallopeptidase, belonging to the M28 peptidase family. It possesses hydrolyzing enzyme activities and is also known as FOLH1 (folate hydrolase 1), GCP2 (glutamate carboxypeptidase II), and NAALADase I (N-acetylated- $\alpha$ -linked acidic dipeptidase I). PSMA is expressed by normal and malignant prostate epithelial cells, by urothelial adenocarcinoma, and vasculatures of other malignancies. It is also found in the nervous system.

**Antigen References:**

1. Silver DA, *et al.* 1997. *Clin. Cancer Res.* 3:81.
2. Troyer JK, *et al.* 1995. *Int. J. Cancer.* 62:552.
3. Mannweiler S, *et al.* 2009. *Pathol. Oncol. Res.* 15:167.