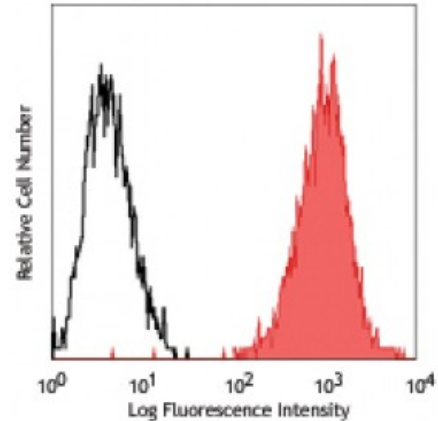


Purified anti-human PSMA (FOLH1)

Catalog # / Size: 2312510 / 100 µg
Clone: LNI-17
Isotype: Mouse IgG1, κ
Reactivity: Human
Preparation: The antibody was purified by affinity chromatography.
Formulation: Phosphate-buffered solution, pH 7.2, containing 0.09% sodium azide.
Concentration: 0.5



Human prostatic adenocarcinoma cell line LNCaP stained with purified LNI-17 conjugated to PE

Applications:

Applications: Flow Cytometry

Recommended Usage: Each lot of this antibody is quality control tested by immunofluorescent staining with flow cytometric analysis. For flow cytometric staining, the suggested use of this reagent is ≤ 0.5 microg per million cells in 100 microL volume. It is recommended that the reagent be titrated for optimal performance for each application.

Application References: NULL

Description: PSMA (prostate-specific membrane antigen) is a type II transmembrane zinc metallopeptidase, belonging to the M28 peptidase family. It possesses hydrolyzing enzyme activities and is also known as FOLH1 (folate hydrolase 1), GCP2 (glutamate carboxypeptidase II), and NAALADase I (N-acetylated- α -linked acidic dipeptidase I). PSMA is expressed by normal and malignant prostate epithelial cells, by urothelial adenocarcinoma, and vasculatures of other malignancies. It is also found in the nervous system.

Antigen References:

1. Silver DA, *et al.* 1997. *Clin. Cancer Res.* 3:81.
2. Troyer JK, *et al.* 1995. *Int. J. Cancer.* 62:552.
3. Mannweiler S, *et al.* 2009. *Pathol. Oncol. Res.* 15:167.