

PerCP/Cy5.5 anti-human CD146 (MUC18, Mel-CAM)

Catalog # / Size: 2310070 / 100 tests
2310065 / 25 tests

Clone: SHM-57

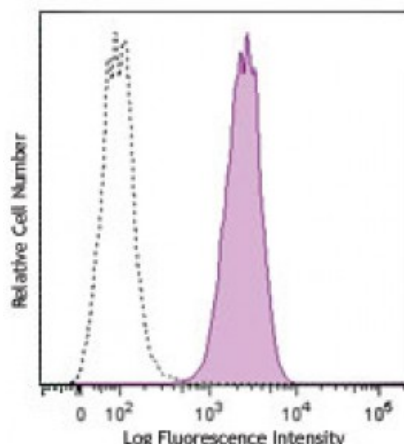
Isotype: Mouse IgG2a, κ

Reactivity: Human

Preparation: The antibody was purified by affinity chromatography and conjugated with PerCP/Cy5.5 under optimal conditions. The solution is free of unconjugated PerCP/Cy5.5 and unconjugated antibody.

Formulation: Phosphate-buffered solution, pH 7.2, containing 0.09% sodium azide and 0.2% (w/v) BSA (origin USA).

Concentration: Lot-specific



Human cervical cancer cell line, HeLa, stained with purified CD146 (clone SHM-57) PerCP/Cy5.5 (filled histogram) or mouse IgG2a, κ PerCP/Cy5.5 isotype control (open histogram).

Applications:

Applications: Flow Cytometry

Recommended Usage: Each lot of this antibody is quality control tested by immunofluorescent staining with flow cytometric analysis. For flow cytometric staining, the suggested use of this reagent is 5 microL per million cells or 5 microL per 100 microL of whole blood. It is recommended that the reagent be titrated for optimal performance for each application.

* PerCP/Cy5.5 has a maximum absorption of 482 nm and a maximum emission of 690 nm.

Application References: NULL

Description: CD146 is a 118 kD integral transmembrane glycoprotein also known as MUC18, S-Endo, MCAM, and Mel-CAM (melanoma cell adhesion molecule). It belongs to the immunoglobulin superfamily. CD146 is expressed on melanoma cells, epithelial cells, endothelial cells, fibroblasts, activated T cells, multipotent mesenchymal stromal cells, and activated keratinocytes. CD146 mediates heterophilic cell adhesion and regulates monocyte transendothelial migration. The ligand of CD146 remains to be identified.

Antigen References:

1. Pickl WF, *et al.* 1997. *J. Immunol.* 158:2107
2. Weninger W, *et al.* 2000. *J. Invest. Dermatol.* 115:219
3. Sorrentino A, *et al.* 2008. *Exp. Hematol.* 36:1035
4. Bardin N, *et al.*