
PE/Cy7 anti-human CD146 (MUC18, Mel-CAM)

Catalog # / Size: 2310045 / 25 tests
2310050 / 100 tests

Clone: SHM-57

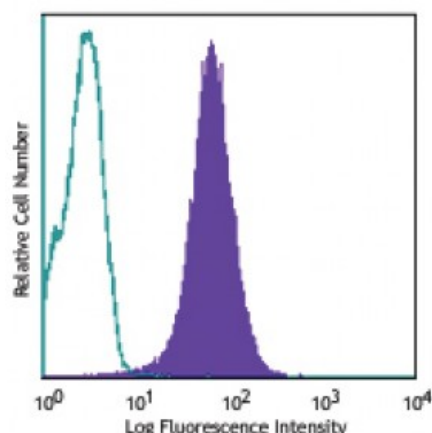
Isotype: Mouse IgG2a, κ

Reactivity: Human

Preparation: The antibody was purified by affinity chromatography, and conjugated with PE/Cy7 under optimal conditions. The solution is free of unconjugated PE/Cy7 and unconjugated antibody.

Formulation: Phosphate-buffered solution, pH 7.2, containing 0.09% sodium azide and 0.2% (w/v) BSA (origin USA).

Concentration: Lot-specific



Human cervical cancer cell line, Hela, stained with SHM-57 PE/Cy7

Applications:

Applications: Flow Cytometry

Recommended Usage: Each lot of this antibody is quality control tested by immunofluorescent staining with flow cytometric analysis. **Test size products are transitioning from 20 microL to 5 microL per test.** Please check your vial or your CoA to find the suggested use of this reagent per million cells in 100 microL staining volume or per 100 microL of whole blood. It is recommended that the reagent be titrated for optimal performance for each application.

Application References: NULL

Description: CD146 is a 118 kD integral transmembrane glycoprotein also known as MUC18, S-Endo, MCAM, and Mel-CAM (melanoma cell adhesion molecule). It belongs to the immunoglobulin superfamily. CD146 is expressed on melanoma cells, epithelial cells, endothelial cells, fibroblasts, activated T cells, multipotent mesenchymal stromal cells, and activated keratinocytes. CD146 mediates heterophilic cell adhesion and regulates monocyte transendothelial migration. The ligand of CD146 remains to be identified.

Antigen References:

1. Pickl WF, *et al.* 1997. *J. Immunol.* 158:2107
2. Weninger W, *et al.* 2000. *J. Invest. Dermatol.* 115:219
3. Sorrentino A, *et al.* 2008. *Exp. Hematol.* 36:1035
4. Bardin N, *et al.*