

Alexa Fluor® 488 anti-human CD146 (MUC18, Mel-CAM)

Catalog # / Size: 2310040 / 100 tests
2310035 / 25 tests

Clone: SHM-57

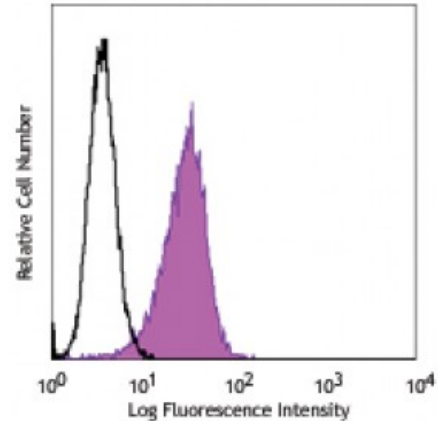
Isotype: Mouse IgG2a, κ

Reactivity: Human

Preparation: The antibody was purified by affinity chromatography, and conjugated with Alexa Fluor® 488 under optimal conditions.

Formulation: Phosphate-buffered solution, pH 7.2, containing 0.09% sodium azide and 0.2% (w/v) BSA (origin USA).

Concentration: Lot-specific



Human cervical cancer cell line, Hela, stained with SHM-57 Alexa Fluor® 488

Applications:

Applications: Flow Cytometry

Recommended Usage: Each lot of this antibody is quality control tested by immunofluorescent staining with flow cytometric analysis. For flow cytometric staining, the suggested use of this reagent is 5 microL per million cells or 5 microL per 100 microL of whole blood. It is recommended that the reagent be titrated for optimal performance for each application.

* Alexa Fluor® 488 has a maximum emission of 519 nm when it is excited at 488 nm.

Application: NULL

References:

Description: CD146 is a 118 kD integral transmembrane glycoprotein also known as MUC18, S-Endo, MCAM, and Mel-CAM (melanoma cell adhesion molecule). It belongs to the immunoglobulin superfamily. CD146 is expressed on melanoma cells, epithelial cells, endothelial cells, fibroblasts, activated T cells, multipotent mesenchymal stromal cells, and activated keratinocytes. CD146 mediates heterophilic cell adhesion and regulates monocyte transendothelial migration. The ligand of CD146 remains to be identified.

Antigen References:

1. Pickl WF, *et al.* 1997. *J. Immunol.* 158:2107
2. Weninger W, *et al.* 2000. *J. Invest. Dermatol.* 115:219
3. Sorrentino A, *et al.* 2008. *Exp. Hematol.* 36:1035
4. Bardin N, *et al.*