

**Purified anti-human CD146 (MUC18, Mel-CAM)**

**Catalog # / Size:** 2310010 / 100 µg  
2310005 / 25 µg

**Clone:** SHM-57

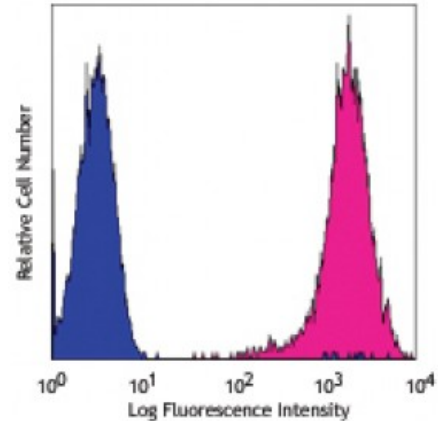
**Isotype:** Mouse IgG2a, κ

**Reactivity:** Human

**Preparation:** The antibody was purified by affinity chromatography.

**Formulation:** Phosphate-buffered solution, pH 7.2, containing 0.09% sodium azide.

**Concentration:** 0.5



Human cervical cancer cell line, HeLa, stained with purified SHM-57 conjugated with PE

**Applications:**

**Applications:** Flow Cytometry

**Recommended Usage:** Each lot of this antibody is quality control tested by immunofluorescent staining with flow cytometric analysis. For flow cytometric staining, the suggested use of this reagent is  $\leq 0.5$  microg per million cells in 100 microL volume. It is recommended that the reagent be titrated for optimal performance for each application.

**Application References:** NULL

**Description:** CD146 is a 118 kD integral transmembrane glycoprotein also known as MUC18, S-Endo, MCAM, and Mel-CAM (melanoma cell adhesion molecule). It belongs to the immunoglobulin superfamily. CD146 is expressed on melanoma cells, epithelial cells, endothelial cells, fibroblasts, activated T cells, multipotent mesenchymal stromal cells, and activated keratinocytes. CD146 mediates heterophilic cell adhesion and regulates monocyte transendothelial migration. The ligand of CD146 remains to be identified.

**Antigen References:**

1. Pickl WF, *et al.* 1997. *J. Immunol.* 158:2107
2. Weninger W, *et al.* 2000. *J. Invest. Dermatol.* 115:219
3. Sorrentino A, *et al.* 2008. *Exp. Hematol.* 36:1035
4. Bardin N, *et al.*