

**FITC anti-human CX3CR1**

**Catalog # / Size:** 2308030 / 100 tests  
2308025 / 25 tests

**Clone:** 2A9-1

**Isotype:** Rat IgG2b, κ

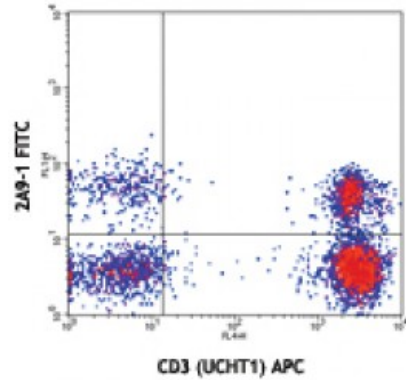
**Immunogen:** CX3CR1-EGFP fusion protein

**Reactivity:** Human

**Preparation:** The antibody was purified by affinity chromatography, and conjugated with FITC under optimal conditions. The solution is free of unconjugated FITC.

**Formulation:** Phosphate-buffered solution, pH 7.2, containing 0.09% sodium azide and 0.2% (w/v) BSA (origin USA).

**Concentration:** Lot-specific



Human peripheral blood lymphocytes stained with 2A9-1 FITC and anti-CD3 (UCHT1) APC

**Applications:**

**Applications:** Flow Cytometry

**Recommended Usage:** Each lot of this antibody is quality control tested by immunofluorescent staining with flow cytometric analysis. **Test size products are transitioning from 20 microL to 5 microL per test.** Please check your vial or your CoA to find the suggested use of this reagent per million cells in 100 microL staining volume or per 100 microL of whole blood. It is recommended that the reagent be titrated for optimal performance for each application.

**Application References:**

1. Nishimura M, *et al.* 2002. *J. Immunol.* 168:6173
2. Nanki T, *et al.* 2002. *Arthritis Rheum.* 46:2878
3. Kobayashi T, *et al.* 2007. *Inflamm Bowel Dis.* 13:837
4. Remmerswaal EB, *et al.* 2012. *Blood.* 119:1702. [PubMed](#)
5. van de Berg PJ, *et al.* 2012. *Clin Vaccine Immunol.* 79:772. [PubMed](#)
6. Feuser K, *et al.* 2012. *Cytokine.* 58:178. [PubMed](#)
7. Zhao T, *et al.* 2012. *PLoS One.* 7:e43399. [PubMed](#)
8. Kleinnijenhuis J, *et al.* 2012. *PNAS.* 109:17537. [PubMed](#)
9. Staumont-Salle D, *et al.* 2014. *J Exp Med.* 211:1185. [PubMed](#)
10. Verschoor CP, *et al.* 2014. *PLoS One.* 9:104522. [PubMed](#)
11. Fadini GP, *et al.* 2014. *Atherosclerosis.* 237:805. [PubMed](#)

**Description:** CX3CR1 is a G-protein- coupled seven-transmembrane chemokine receptor, also called GPR13 or V28. It is expressed on NK cells, T cell subset, monocytes/macrophages, dendritic cells, and some malignant epithelial cells. CX3CL1 (known as fractalkine, neurotactin) is the ligand of CX3CR1. CX3CL1 is a unique transmembrane molecule with a CX3C-motif chemokine domain and a mucin-like stalk. CX3CL1 is expressed by activated-endothelial cells, neurons, and astrocytes. The interaction of CX3CR1 and its ligand mediates cell firm adhesion and migration.

**Antigen References:**

1. Imai T, *et al.* 1997. *Cell.* 91:521
2. Fong AM, *et al.* 1998. *J. Exp. Med.* 188:1413
3. Auffray C, *et al.* 2009. *J. Exp. Med.* 206:595