

PerCP/Cy5.5 anti-human CD160

Catalog # / Size: 2306050 / 100 tests
2306045 / 25 tests

Clone: BY55

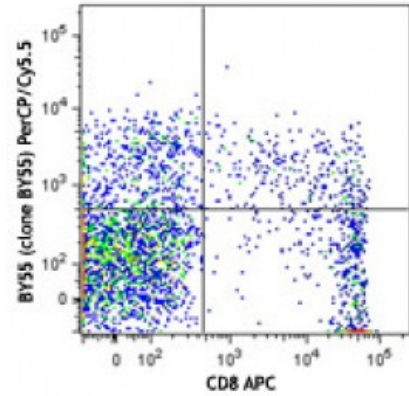
Isotype: Mouse IgM, κ

Reactivity: Human

Preparation: The antibody was purified by affinity chromatography and conjugated with PerCP/Cy5.5 under optimal conditions. The solution is free of unconjugated PerCP/Cy5.5 and unconjugated antibody.

Formulation: Phosphate-buffered solution, pH 7.2, containing 0.09% sodium azide and 0.2% (w/v) BSA (origin USA).

Concentration: Lot-specific



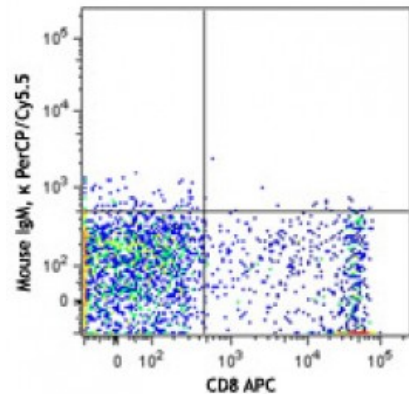
Human peripheral blood lymphocytes were stained with CD8 APC and CD160 (clone BY55) PerCP/Cy5.5 (top) or mouse IgM, κ PerCP/Cy5.5 isotype control (bottom).

Applications:

Applications: Flow Cytometry

Recommended Usage: Each lot of this antibody is quality control tested by immunofluorescent staining with flow cytometric analysis. For flow cytometric staining, the suggested use of this reagent is 5 microL per million cells or 5 microL per 100 microL of whole blood. It is recommended that the reagent be titrated for optimal performance for each application.

* PerCP/Cy5.5 has a maximum absorption of 482 nm and a maximum emission of 690 nm.



- Application References:**
1. Anumanthan A, *et al.* 1998. *J. Immunol.* 161:2780.
 2. Maiza H, *et al.* 1993. *J. Exp. Med.* 178:1121.

Description: CD160 is a 27 kD GPI-anchored glycoprotein also known as BY55, NK1, and NK28. A member the Ig superfamily, CD160 exists as a disulfide-bond multimer, expressed on the surface of a subpopulation of NK cells, γδ T cells, subset of CD8+ T cells, and intestinal intraepithelial lymphocytes (IEL). CD160 plays costimulatory roles through binding to classical and nonclassical MHC-I molecules.

- Antigen References:**
1. Zola H, *et al.* 2007. *Leukocyte and Stromal Cell Molecules: The CD Markers* Wiley-Liss A John Wiley & Sons Inc, Publication.
 2. Merino J, *et al.* 2007. *Clin. Exp. Immunol.* 149:87.
 3. Barakonyi A, *et*